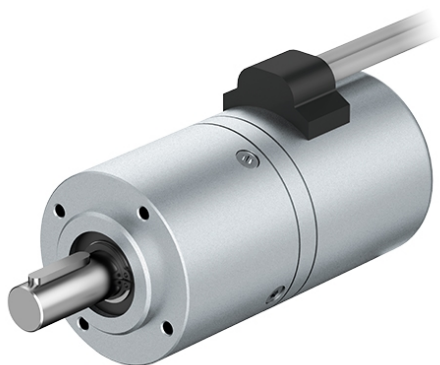


brushless EC motor, external rotor (integr. electr.) with planetary gearhead NoiselessPlus 63

VDC-3-49.15-B00-K4 - NoiselessPlus 63



Characteristics of the drive solution

Typ	Unit	Value
Order number	-	VG.VDC4915BK4.NP63.1.4
Output power	W	90.0
Output torque	Nm	0.93
Output speed	rpm	924.0

Motor

Typ	Unit	Value
Type of motor	-	brushless EC motor, external rotor (integr. electr.)
Motor designation	-	VDC-3-49.15-B00-K4
Voltage	V	24
Output speed	rpm	4000
Nominal power	W	100.0
Rated current	A	5.2
Torque	Ncm	23.9
weight of Motor	kg	0.59

Gearbox

Typ	Unit	Value
Type of gear	-	planetary gearhead
name of gearbox	-	NoiselessPlus 63

No of reduction stages	-	1
Untersetzung	-	4.3
Max. nominal torque	Nm	9.0
Efficiency	-	90%
Output shaft bearing	-	2 groove ball bearing with carrier cage
Lubrication	-	maint. free-grease lubricated for life
Gearhead play	-	about 0.2° to 0.5°