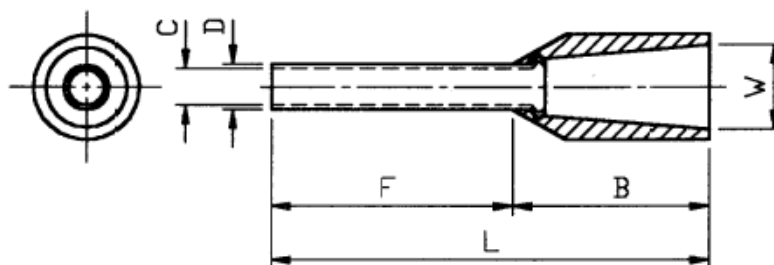


Datasheet

Insulated Bootlace Ferrule, 8mm Pin Length

RS Stock number [513-2590](#)

Dimensions (mm)



Stock Number	F ± 0.50	L ± 1.00	W ± 0.30	B ± 0.50	D ± 0.10	C ± 0.10	Colour
513-2590	8	14.3	2.8	6.3	1.5	1.2	GREY

Specifications

- Maximum Electrical Rating: 105 ° C 300 Volts Max
- Insulation Material: Nylon
- Terminal Material: Copper Tube
- Wire Range: 20A.W.G (0.75²)