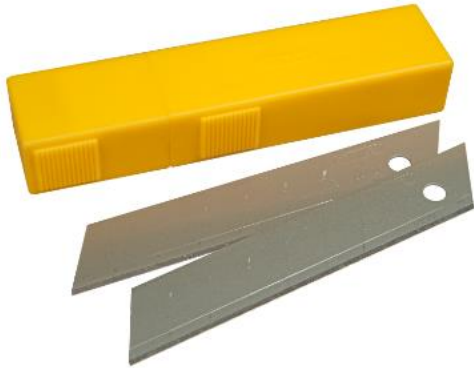


# STANLEY

## STANLEY 25mm Snap-off Knife Blades

0-11-325



### Features:

- Spare blade dispenser with blade breaker and storage of used segments
- Reinforced thickness specially for intensive use (1mm thick)
- 6 breakable blade segments

### Description:

The STANLEY 25mm Snap-off Knife Blades have 6 breakable blade segments. The blade dispenser included features a built in blade snapper which can easily be used for safe blade removal and can also be used to store the snapped segments safely. The pack includes 10 blades.

Specifications	
Blade Width	25 mm
Blade Type	Snap Off
Quantity	10