



## Stop & Stay

### Multi-position gas spring

Stop & Stay gas springs enable multi-position holding of a counter balanced weight over the entire stroke of the gas spring.

Based on the proven standard range of Camloc gas springs, Stop & Stay's are easy to fit with simple adjustment to determine the correct level of support. Once fitted, finger tip control allows movement to any position required. The lock-nut is adjusted to suit the application's weight (about a half turn), thereby applying a 'stick-slip' friction to the rod.

Typically, the gas spring force is pre-set to carry the weight of the application (e.g. a canopy) in the normal manner. This allows the user to raise, lower and position the canopy in any position using the minimum of effort and in quick time.

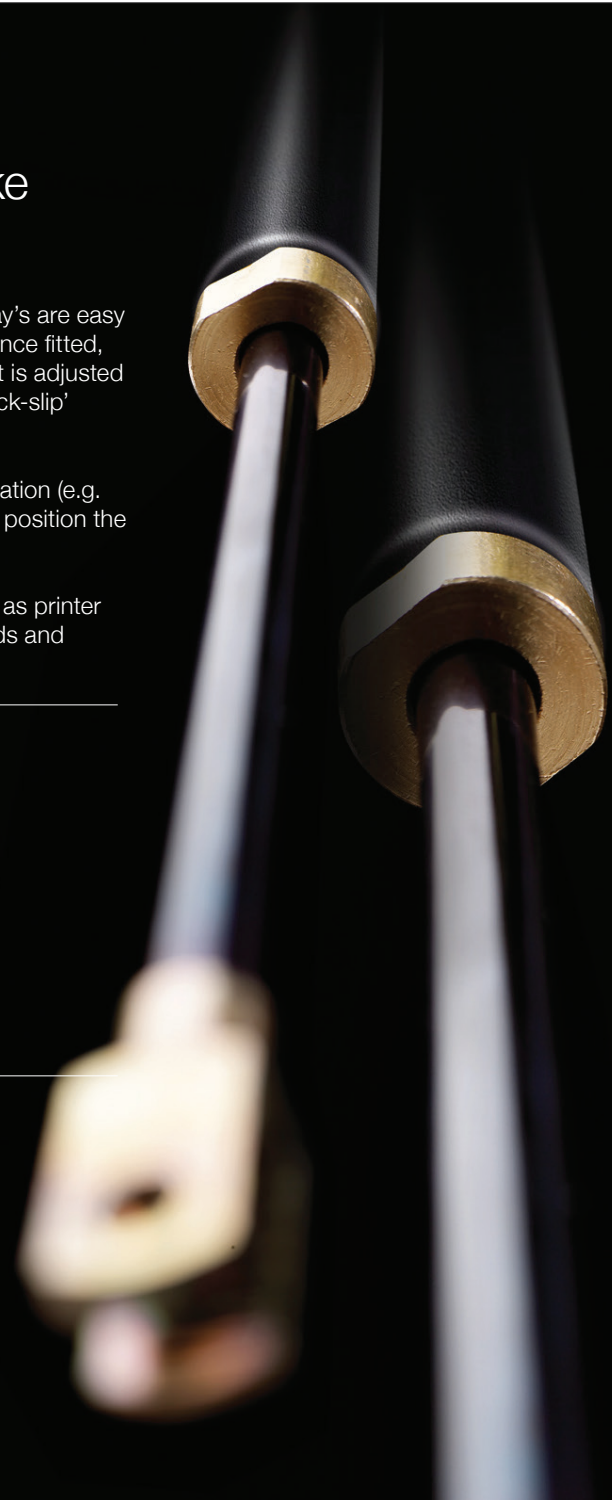
Stop & Stay gas springs are ideal for a wide variety of applications such as printer canopies, monitor arms, acoustic hoods, delicatessen counters, sunbeds and many more.

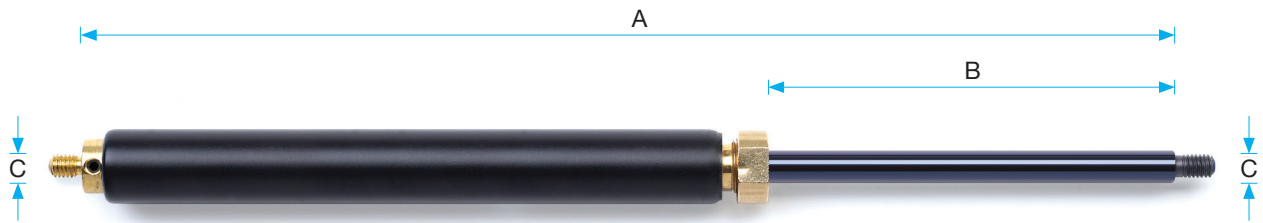
### Benefits

- **Multi-position holding of counter-balanced weights**
- **Simple adjustment to determine correct setting**
- **Positional control**
- **Safe to use and operate**
- **Maintenance free**
- **Available in stainless steel**
- **BS EN ISO 9001 Registered Company**

### Pack Contents

- Parts are supplied boxed as a kitted pair comprising;
- 2 x Stop & Stay with Vari-Lift™ valve
  - 4 x Pre-fitted ball joint end fittings
  - 4 x Optional eye end fittings
  - 1 x Allen key for degassing Vari-Lift™ valve
  - 1 x Instruction leaflet





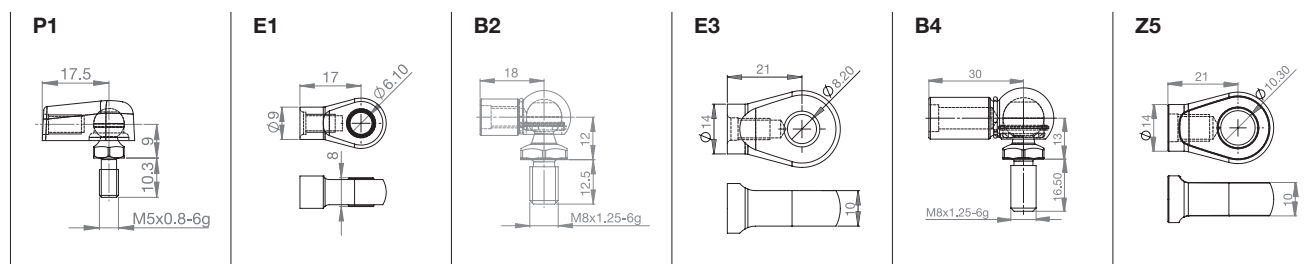
## An extensive range of sizes and forces

Gas springs are commonly referred to by their size. The three sizes for Stop & Stay gas springs are 6-15, 8-18 and 10-23. The sizes directly relate to the diameter of the rod and the tube, for example an 8-18 will have a rod diameter of 8mm and a tube diameter of 18mm.

## Stop & Stay

| RS No.   | Camloc Part No. | Econoloc Size (mm) | Max. Approx. Lift Weight (per PAIR of springs) | Extended Length Excl. End Fittings (mm) A | Stroke (mm) B | Thread Size C | Max. Force Per Spring (Newtons) | Supplied End Fit *Denotes Pre-Fitted |
|----------|-----------------|--------------------|--|---|---------------|---------------|---------------------------------|--------------------------------------|
| 182-4627 | SSV6050500001   | 6-15               | Up to 10Kg                                     | 170                                       | 60            | M5 x 0.8      | 400N                            | P1* & E1                             |
| 182-4633 | SSV6050500002   |                    |  | 250                                       | 100           |               |                                 |                                      |
| 182-4649 | SSV6050500003   |                    |  | 350                                       | 150           |               |                                 |                                      |
| 182-4655 | SSV6050500004   |                    |  | 450                                       | 200           |               |                                 |                                      |
| 182-4661 | SSY8060600003   | 8-18               | 10 to 40Kg                                     | 264                                       | 100           | M6 x 1.0      | 650N                            | B2* & E3                             |
| 182-4677 | SSY8060600004   |                    |  | 364                                       | 150           |               |                                 |                                      |
| 182-4683 | SSY8060600005   |                    |  | 464                                       | 200           |               |                                 |                                      |
| 182-4699 | SSY8060600006   |                    |  | 564                                       | 250           |               |                                 |                                      |
| 182-4706 | SSV1080800001   | 10-23              | 40 to 150Kg                                    | 260                                       | 100           | M8 x 1.25     | 1200N                           | B4* & Z5                             |
| 182-4712 | SSV1080800002   |                    |  | 460                                       | 200           |               |                                 |                                      |
| 182-4728 | SSV1080800003   |                    |  | 560                                       | 250           |               |                                 |                                      |
| 182-4734 | SSV1080800004   |                    |  | 660                                       | 300           |               |                                 |                                      |

## End Fitting Dimensions (see table above for corresponding Econoloc)



## Vari-Lift™ Valve and De-gassing

Parts are supplied fitted with a Vari-Lift™ valve. The force in the gas spring is set to the maximum. Each gas spring is then de-gassed to the force required using a standard 2mm Allen key (supplied).

Fit the gas spring to the application with the rod down and brass Vari-Lift™ valve uppermost.

Using the Allen key provided, undo the Allen screw approximately ¼ of a turn until the gas can be heard escaping. Do not remove the Allen key. Tighten the Allen screw almost immediately. Do not use excessive force. Repeat on the second gas spring and try the application. Ensure that the Allen screw is fully tightened each time.

Repeat the process releasing a small amount of gas at a time until the required action is achieved.

**Camloc Motion Control Ltd**  
 15 New Star Road, Leicester, LE4 9JD, UK  
 Tel: +44 (0)116 274 3600 Fax: +44 (0)116 274 3620  
 E-mail: info@camloc.com Website: www.camloc.com

Vari-Lift, Swift & Sure, Stop & Stay and Econoloc are trade names of Camloc Motion Control Ltd.



FMS83999