



Datasheet

RS Pro DPI Handheld Pressure Indicator

Stock Number: 146-7721

The RS Pro DPI Series of handheld pressure indicators combine tough and rugged design with accurate and reliable pressure measurement.

Compact, robust and lightweight, the RS Pro DPI is designed for single handed operation and provides many essential features required for routine maintenance and system troubleshooting.



Features

- Ranges 0 to 70 mbar (1 psi) through to 700 bar (10,000 psi)
- 0.1% full scale (FS) accuracy
- Rugged, lightweight handheld design
- Leak test, tare, max/min and filter



Every part matters

RS Pro DPI

- Impact resistant, sealed to Type 12/IP54
- Clear high resolution LCD
- Long battery life
- Integral desk stand and hanger

Improves Test Efficiency

- No warm up time
- 14 pressure units
- One minute leak test
- Ambient temperature measurement

The calibration tools required to comply with quality assurance programs such as ISO9000 put ever increasing demands on maintenance budgets. The RS Pro DPI used in conjunction with pneumatic or hydraulic pressure generators, is a simple, low cost solution complementing the wide range of RS Pro tools.

Special Features

Pressure Units

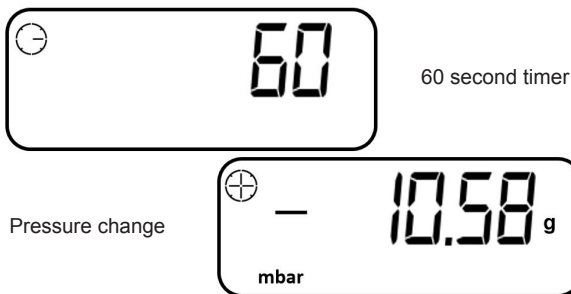
psi, inHg, inH₂O (4°C, 20°C, and 60°F), ftH₂O (4°C, 20°C, and 60°F), mmHg, mHg, mbar, bar, mH₂O, Pa, hPa, KPa, MPa, Kgf/cm²

Calibration Units

mbar, bar, psi, kPa, mPa, hPa, Kgh/cm²

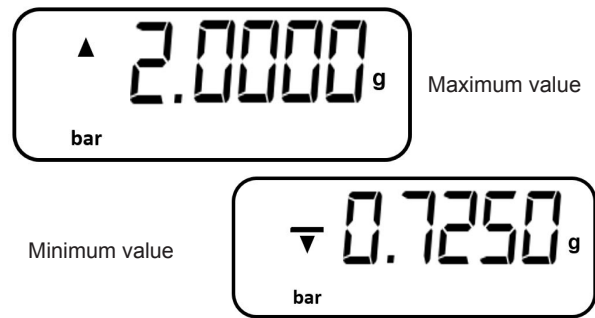
Leak Test

Standard 60 second leak test.



Max/Min

Captures both maximum and minimum readings.



Zero

Zero pressure correction.

Tare

0 to 100% FS zero offset capability.

Filter

10 reading rolling average for unstable pressures.

Alarm

Adjustable high pressure alarm with visual and audible warning.

Ambient Temperature

°C and °F reading of local condition ±1.5°C (±3°F).

Calibration

Used with an pneumatic or hydraulic pumps, the RS Pro DPI becomes a low cost calibration tool for gauges and indicators.

Power Management

Low battery indicator and selectable 'auto off'.

Pressure Ranges

RS Pro DPI Internal Sensor Version

Includes an internal sensor and has a G 1/8 female (with 4 mm ID hose adaptor) pressure connector. Most internal ranges are available from stock.

RS Pro DPI Remote Sensor Version

Has an integral cable connector, a 3 ft (1 m) mating cable and a G 1/4 female pressure connector.

RS Pro Device	RS Pro Device		
Range	RS Article Number	Internal	Remote
70 mbar (1 psi)	146-7717	D	N/A
350 mbar (5 psi)	146-7718	N/A	D
1 bar (15 psi)	146-7719	D	N/A
7 bar (100 psi)	146-7720	G	N/A
10 bar (150 psi)	146-7721	N/A	A
20 bar (300 psi)	146-7722	N/A	G
700 bar (10,000 psi)	146-7723	N/A	A

a = absolute, d = differential, g = gauge

Accuracy

±0.1% FS non-linearity, hysteresis and repeatability.

Environmental

Temperature Performance Averaged 0°C to 50°C (32°F to 122°F)

- ±0.02% reading/°C (±0.01% rdg/°F)
- For absolute ranges ≤ 1 bar (15 psi) add ±0.05% FS/°C (±0.025% FS/°F)
- For absolute ranges > 1 bar (15 psi) add ±0.02% FS/°C (±0.01% FS/°F)
- Calibrated range: 0°C to 50°C (32°F to 122°F)
- Operating range: -10°C to 50°C (15°F to 122°F)

Humidity

0 to 95% non condensing.

Overpressure

Safe to 2 x FS. Display flashes at 110% FS.

Media Compatibility

- Internal sensor: stainless steel, except positive differential non-corrosive fluid and negative differential dry gas.
- Remote sensor: stainless steel, except negative differential non-corrosive fluid.

Safety Conformance

EN61326-1, CE marked.

Display

13mm LCD with 99999 readout.

Weight

<500 g.

Dimensions

190 x 90 x 36 mm.

Battery

3 x Alkaline cells.

Accessories

The RS Pro DPI is supplied with a user guide and calibration certificate as standard.

Calibration Standards

All instruments are calibrated against precision pressure calibration equipment, which is traceable to the international standards.



Every part matters