

PRODUCT DESCRIPTION CODE :

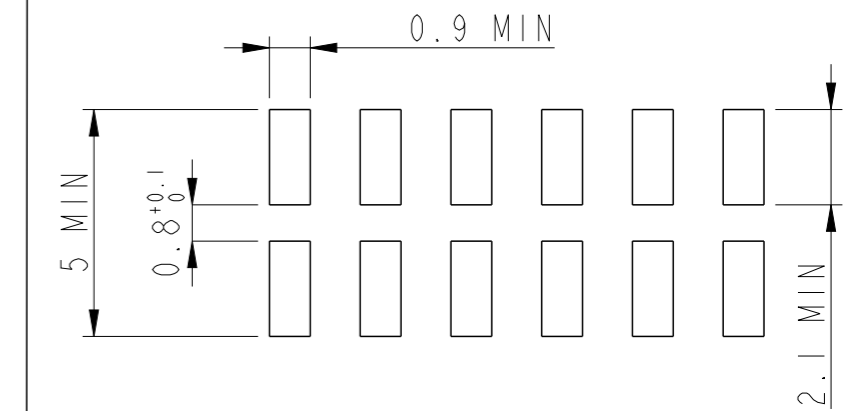
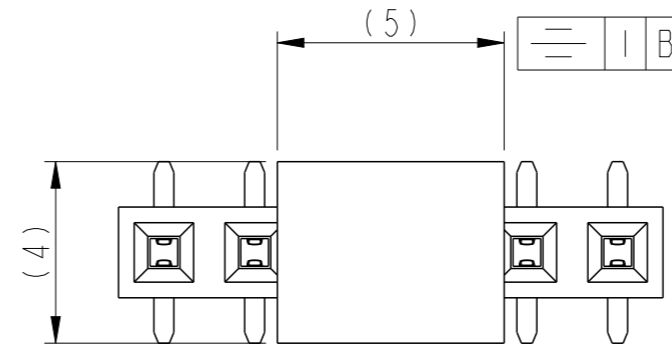
10131935-YXXXLF

RoHS COMPATIBLE, SEE NOTE 3
 PACKAGING : "A" : TAPE & REEL
 "U" : TUBE
 PLATING : TOTAL NUMBER OF POSITIONS 02 TO 25

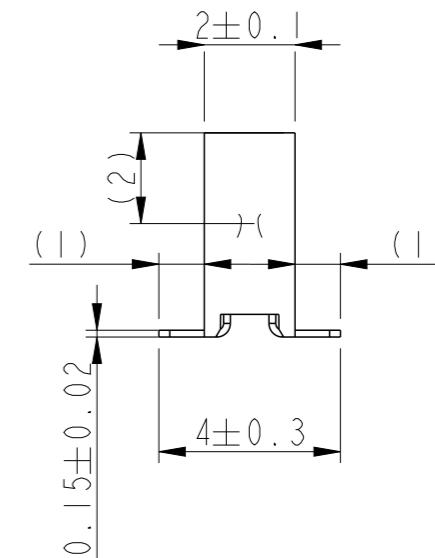
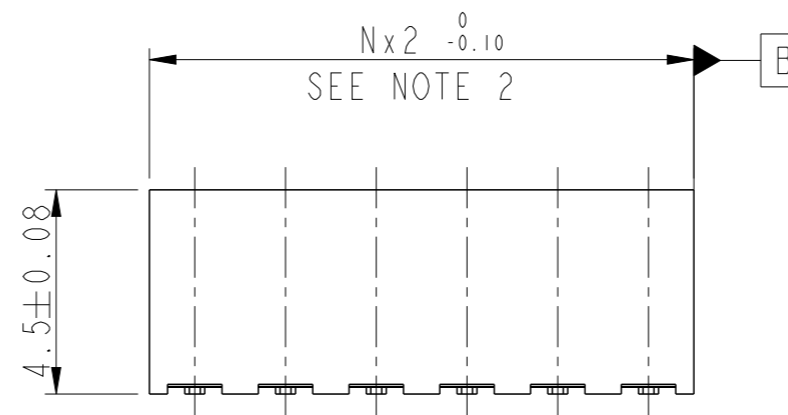
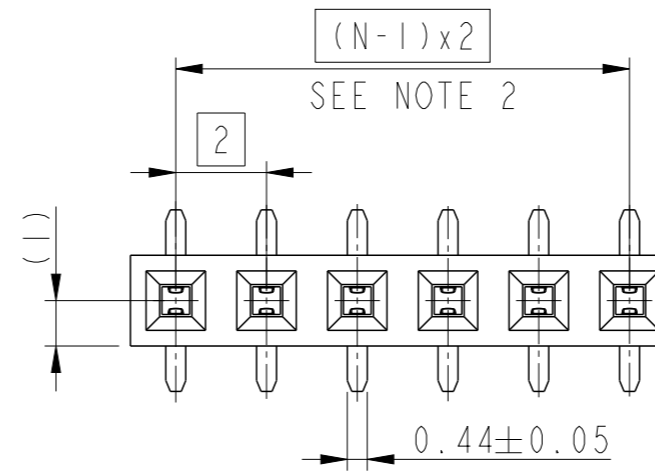
- 1 = 0.76 μm GOLD ON CONTACT AREA
2.54μm MIN MATTE TIN ON TAIL
- 2 = 0.38μm GOLD ON CONTACT AREA
2.54μm MIN MATTE TIN ON TAIL
- 3 = 0.20μm GOLD ON CONTACT AREA
2.54μm MIN MATTE TIN ON TAIL
- 4 = 0.76 μm GXT ON CONTACT AREA
2.54μm MIN MATTE TIN ON TAIL
- 5 = 0.38μm GXT ON CONTACT AREA
2.54μm MIN MATTE TIN ON TAIL
- 6 = 0.20μm GXT ON CONTACT AREA
2.54μm MIN MATTE TIN ON TAIL
- 9 = 2.54μm MIN MATTE TIN FULL PLATED
1.27μm NICKEL MIN UNDERLAYER

NOTES :

- 1- MATERIAL
HOUSING : HIGH TEMPERATURE GLASS FILLED FLAME
RETARDANT PER UL 94 V-0
TERMINAL: COPPER ALLOY
- 2- TO DETERMINE DIMENSIONS :
N = NUMBER OF POSITIONS PER ROW
EXAMPLE : 8 POS N x 2 = 16mm
UP TO N = 12 TOLERANCE : 0
FROM N = 13 TOLERANCE : 0.05
-0.10
-0.10
- 3 - RoHS COMPATIBLE PRODUCT SPECIFICATIONS
a - PLATING :
"LF" MEANS THE PRODUCT IS LEAD-FREE, 2μm MINIMUM MATTE
TIN OVER 1.27μm MINIMUM NICKEL UNDERPLATE
b - MANUFACTURING PROCESS COMPATIBILITY
THE HOUSING WILL WITHSTAND EXPOSURE TO 260°C PEAK
TEMPERATURE FOR 30 SECONDS MAX IN A CONVECTION, INFRA-RED
OR VAPOR PHASE OR REFLOW OVEN
c - LABELLING :
MEETS PACKAGING SPECS AS PER GS-14-920
d - LEGAL STATEMENT : SEE GS-47-0004



RECOMMENDED PAD LAYOUT



PRELIMINARY

spec ref	-	dr	Cyril Jeune	2014/12/02	projection	mm	size	A3	scale	6:1
tolerance std	ISO 406 ISO 1101	eng	Benoit Vernier	2015/11/16			ecn no	-	rel level	Preliminary
surface	ISO 1302	chr	-	-			product family	-	rel level	Preliminary
linear	0.X ± 0.XX ± 0.XXX ±	appr	-	-			dwg no	10131935	rev	2
angular	0° ±	www.fci.com		cat. no.	-	Product - Customer Drw		sheet 1 of 1		