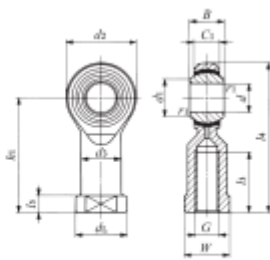


Datasheet

M20 x 1.5 Female Steel Rod End, 20mm Bore Size, 100mm Long , M20 x 1.5 Thread Size, Metric Thread Standard Female

RS Stock number 198-9033



PHS...EC

Identification number	Mass (Ref.) g	Boundary dimensions mm														Ball dia. mm (inch)	Dynamic load capacity C_d N	Static load capacity C_s N
		d	Thread G	d_2	C_1	B	d_1	l_4	h_1	l_3	l_5	W	d_3	d_L	r_{1s} mm			
380	20	M20x1.5	46	18	25	24.4	100	77	40	10	30	27.5	34	0.2	34.925 (1.37)	61 600	30 000	