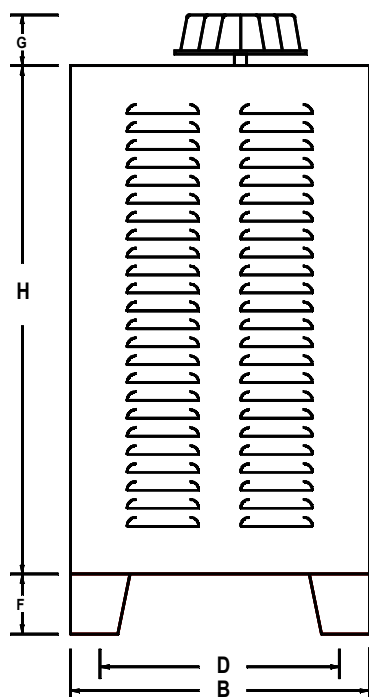
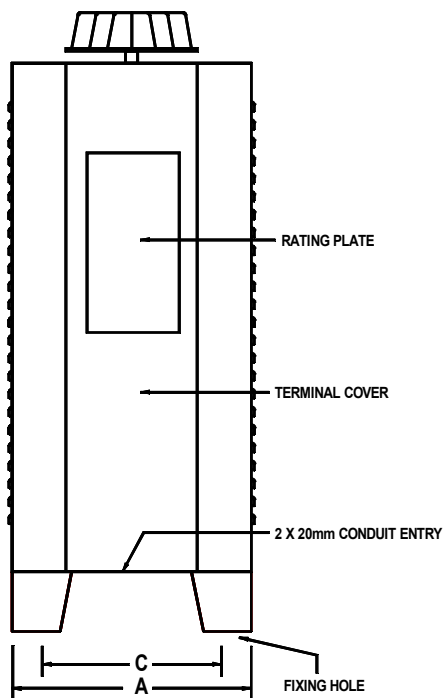
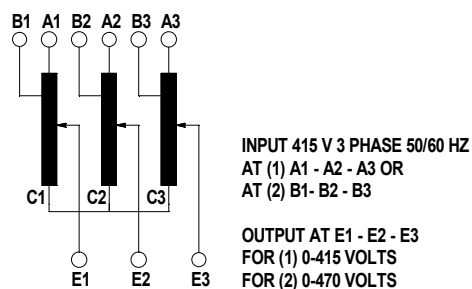


### 3 PH ENCLOSED VARIABLE TRANSFORMERS INSTALLATION AND SAFETY INSTRUCTIONS



1. Read all of these instructions before you use the transformer.
2. This transformer is not designed to provide mains isolation.
3. Variable transformers operate at mains voltage.  
**DO NOT EXCEED THE MAXIMUM VOLTAGE AND CURRENT RATING.**
4. Installation connection and maintenance should only be carried out by suitably qualified personnel.
5. When connected to the electrical supply the terminals, brushes and track face are at mains potential with a potentially lethal voltage.
6. The output from the transformer must always be applied across the load.  
Never connect the transformer in series with the load.
7. The carbon brush should be inspected for damage or wear, faulty or worn brushes will result in damage to the windings.
8. This transformer must be earthed using the earth studs provided.
9. The transformer is Class 1 insulated and must not be tested on Portable Appliance Testers as Class 2 products.  
Flash test only at 2kV between windings and earth.



**CONNECTION ARRANGEMENT**

Type	RS Part Code	Output Amps	DIMENSIONS (mm)								Weight Kgs	
			A	B	C	D	E	F	G	H		
WCV2E-3	8902856	2	150	200	125	155	15	50	30	330	7	15
WCV10E-3	8902850	10	200	250	165	215	25	30	50	425	10	38
WCV20E-3	8902869	20	250	300	210	280	25	50	50	445	11	58

Document Ref

**RS/SI/3VE**

Date

**Aug 2015**

