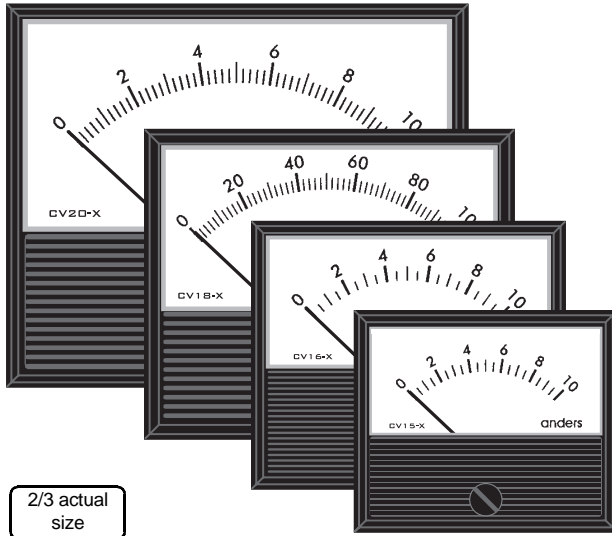


Analogue panel meters

Crystalview Moving Coil Meters

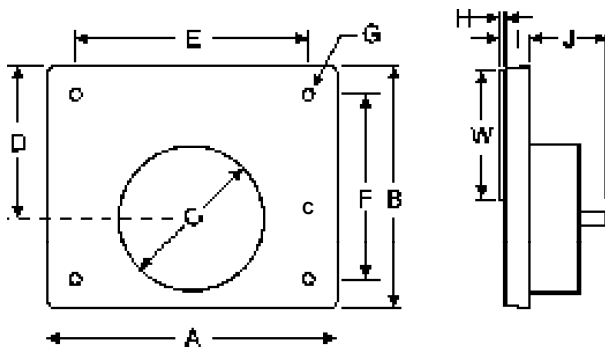


A modern and attractive range of quality dc moving coil meters available at very competitive prices.

There are 4 popular sizes which can be either surface or flush mounted behind the panel through a rectangular cutout. The meters utilise a well proven and robust, 90 degree deflection, pivot and jewel moving coil movement.

Meters are supplied in sensitivities of 100 microamps, 100-0-100 microamps (centre zero), 1 milliamps or as 4-20 milliamps (supressed zero) for signal process indication.

Pre-printed scales are available seperately graduated and numbered 0-10, 0-30, 0-100 and 100-0-100.



Fixing studs on all meters (Dimension G) are M3 x 12mm

Dimensions in mm

| Model | A | B | C | D | E | F | H | I | J | W | Scale Length |
|--------|-----|----|----|------|----|----|-----|------|------|-----------|--------------|
| CV-15X | 57 | 48 | 43 | 24 | 40 | 35 | 1.5 | 14.5 | 28.5 | 50 x 23.5 | 40 |
| CV-16X | 68 | 58 | 45 | 31.5 | 48 | 48 | 1.5 | 14.5 | 28.5 | 61.5 x 28 | 50 |
| CV-18X | 80 | 67 | 50 | 38.5 | 64 | 48 | 1.5 | 14.5 | 28.5 | 72 x 35 | 63 |
| CV-20X | 100 | 83 | 50 | 51.5 | 80 | 64 | 1.5 | 14.5 | 28.5 | 92 x 45 | 78.5 |

- Attractive and modern design
- Choice of printed scales
- 4 popular sizes
- "Easy-fit" scales
- Class 2.0

| Order Code | Size | Range | Rec. Price £: | | | | |
|---------------------|--------|-------------|---------------|----|-----|-----|-----|
| | | | 1+ | 5+ | 10+ | 25+ | 50+ |
| METERS | | | | | | | |
| CV15X1MA | CV-15X | 0-1mA | | | | | |
| CV15X100UA | CV-15X | 0-100µA | | | | | |
| CV15XCZ100UA | CV-15X | 100-0-100µA | | | | | |
| CV15XSZ20MA | CV-15X | 100-0-100µA | | | | | |
| CV16X1MA | CV-16X | 0-1mA | | | | | |
| CV16X100UA | CV-16X | 0-100µA | | | | | |
| CV16XCZ100UA | CV-16X | 100-0-100µA | | | | | |
| CV16XSZ20MA | CV-16X | 4-20mA | | | | | |
| CV18X1MA | CV-18X | 0-1mA | | | | | |
| CV18X100UA | CV-18X | 0-100µA | | | | | |
| CV18XCZ100UA | CV-18X | 100-0-100µA | | | | | |
| CV18XSZ20MA | CV-18X | 4-20mA | | | | | |
| CV20X1MA | CV-20X | 0-1mA | | | | | |
| CV20X100UA | CV-20X | 0-100µA | | | | | |
| CV20XCZ100UA | CV-20X | 100-0-100µA | | | | | |
| CV20XSZ20MA | CV-20X | 4-20mA | | | | | |
| METER SCALES | | | | | | | |
| S/CV15XB | CV-15X | Blank | | | | | |
| S/CV15X10 | CV-15X | 0-10 | | | | | |
| S/CV15X30 | CV-15X | 0-30 | | | | | |
| S/CV15X100 | CV-15X | 0-100 | | | | | |
| S/CV15XCZ100 | CV-15X | 100-0-100 | | | | | |
| S/CV16XB | CV-16X | | | | | | |
| S/CV16X10 | CV-16X | Blank | | | | | |
| S/CV16X30 | CV-16X | 0-30 | | | | | |
| S/CV16X100 | CV-16X | 0-100 | | | | | |
| S/CV16XCZ100 | CV-16X | 100-0-100 | | | | | |
| S/CV18XB | CV-18X | Blank | | | | | |
| S/CV18X10 | CV-18X | 0-10 | | | | | |
| S/CV18X30 | CV-18X | 0-30 | | | | | |
| S/CV18X100 | CV-18X | 0-100 | | | | | |
| S/CV18XCZ100 | CV-18X | 100-0-100 | | | | | |
| S/CV20XB | CV-20X | Blank | | | | | |
| S/CV20X10 | CV-20X | 0-10 | | | | | |
| S/CV20X30 | CV-20X | 0-30 | | | | | |
| S/CV20X100 | CV-20X | 0-100 | | | | | |
| S/CV20XCZ100 | CV-20X | 100-0-100 | | | | | |

AVAILABLE FROM: NATIONAL DISTRIBUTORS OR DIRECT FROM ANDERS SUBJECT TO A MOQ OF 25 PCS.

ANALOGUE/ CV1 Revision 4 03/06/04

PAGE 10

anders electronics plc Bayham Place, London NW1 OEU UK

Tel: +44 (0)20 7380 8167 Fax: +44 (0)20 7874 1908 www.meters.anders.co.uk

Anders Electronics plc (Anders) does not warrant the accuracy or completeness of the information contained herein, the supply of products by Anders is subject to its standard terms and conditions of sale. Prior to concluding any agreement with Anders the customer should satisfy itself of the accuracy and completeness of the information contained herein and should notify to Anders any intended use of the product.

www.anders.co.uk | info@anders.co.uk

