

DRAWING #: CMI800-I

REV.	DATE	REVISION DESCRIPTION	DR.
B	8/98	UPDATE TO ISO 9000	S.T.
C	02/19/03	REDRAWN	A.S.

NOTES:

1. ELECTRICAL:

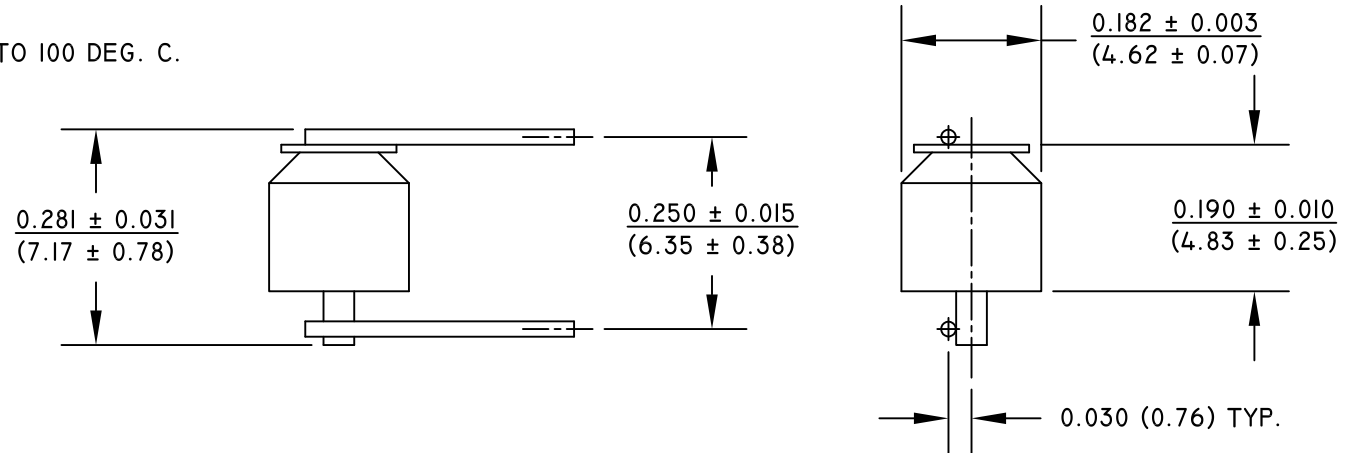
- 1.1 CONTACT CAPACITY: 0.10 A @ 120 VAC, 0.20 A @ 120 VDC RESISTIVE.
- 1.2 CONTACT RESISTANCE 5 OHMS MAX.

2. OPERATE:

- 2.1 OPERATING TEMPERATURE -37 DEG. C TO 100 DEG. C.

3. EXTERNAL FINISH:

- 3.1 TIN PLATED



VIBRATION SWITCH



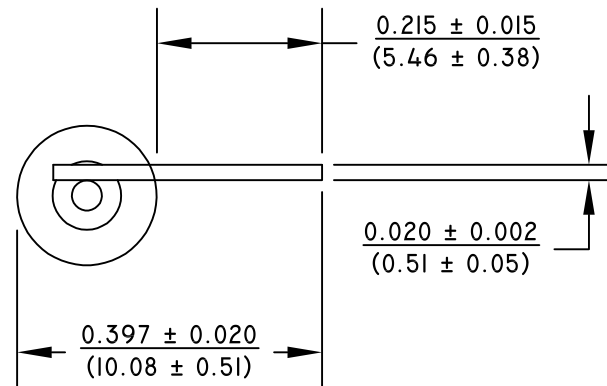
NORMALLY CLOSED-CENTER  
ELECTRODE DOWN



NORMALLY OPEN-CENTER  
ELECTRODE UP



MAY BE OPEN OR CLOSED  
AT HORIZONTAL POSITION



# COMUS INTERNATIONAL

454 ALLWOOD ROAD, CLIFTON, NEW JERSEY 07012

TEL. (973) 777-6900

ENGINEERING		
QUALITY		
PRODUCTION		
APPROVAL	SIGNATURE	DATE

UNSPECIFIED TOLERANCES

DECIMAL: .XX ± .01 [.254]

.XXX ± .005 [.127]

FRACTIONAL: ± 1/64 [.397]

ANGULAR: ± 1/2°

REF.:	SCALE: NONE	DRAWN BY: S.T.	DATE 08/18/98
TITLE: VIBRATION SWITCH			
TYPE: SALES		DRAWING #: CMI800-I	