

# rotronic

**Datenblatt - Fiche technique - Data sheet**

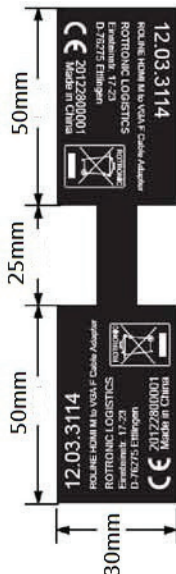
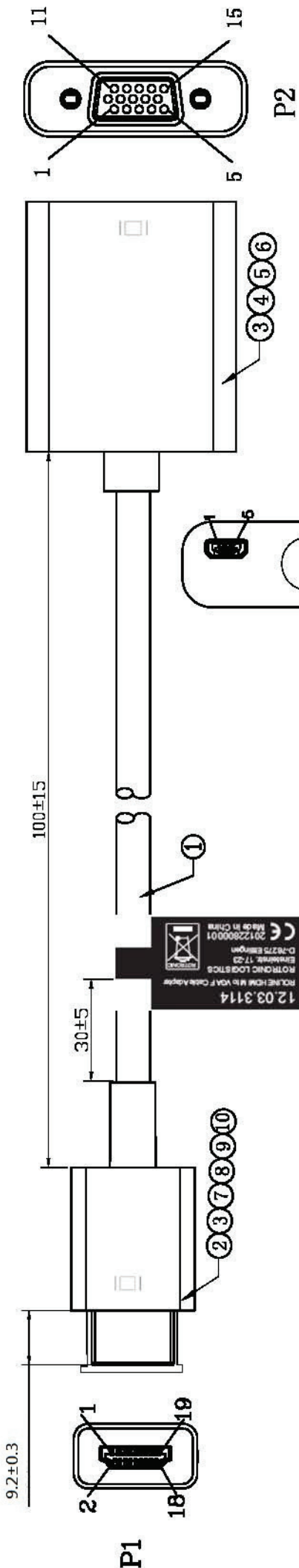
**12.03.3114**



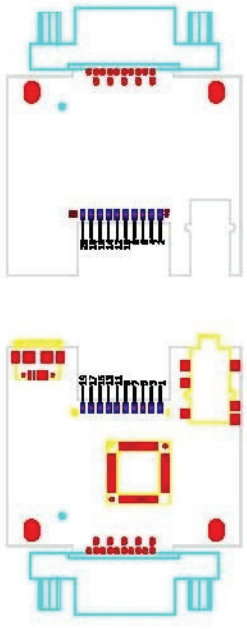
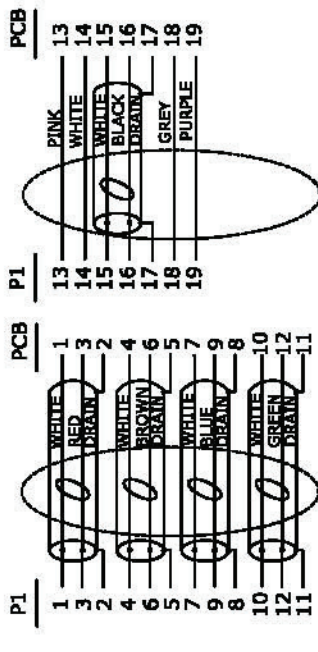
**ROLINE HDMI-VGA Adapterkabel, HDMI ST / VGA BU, 0,15 m**

**ROLINE Adaptateur HDMI-VGA, HDMI M-VGA F,**

**ROLINE HDMI-VGA Cableadapter, HDMI M – VGA F,**



**PIN Assignment**



NO	DESCRIPTION	QTY	UNIT
10	PE	5	g
9	HDMI DUST CAP	1	pcs
8	HDMI AM ABS FRONT SHELL WHITE	1	pcs
7	HDMI AM ABS SHELL WHITE MARKING: <input type="checkbox"/> (PT:00L GREY BC)	1	pcs
6	VGA F (HDMI AM, CM, DM OR Micro BM/VGA P-Micro USB P4X3.5 F PCB)ABS FRONT SHELL WHITE	1	pcs
5	VGA F (HDMI AM, CM, DM OR Micro BM/VGA P-Micro USB P4X3.5 F PCB) ABS SHELL WHITE MARKING: <input type="checkbox"/> (PT:00L GREY BC)	1	pcs
4	HDMI A Type to VGA Adapter INSULATION:GREY NICKEL PLATED PCB+SMT+SOLDER	1	SET
3	65P WHITE PVC	8	g
2	HDMI A/M 19P INSULATION:BLACK SHELL NICKEL PLATED PIN GOLD PLATED	1	pcs
1	UL20276 [3.4AWG (7/0.06TC)*1PR+EAM]*F+32AWG(7/0.08TC)*5C +D(BC)+AB 85% (16/7/0.12AL) OD:4.5MM WHITE	0.1	m
NO	DESCRIPTION	QTY	UNIT

REV.	DESCRIPTION	DATE
⊕	TOLERANCE INCHES M/M	
.X	.015 .30	
.XX	.010 .10	
.XXX	.005 .05	
DRAWN BY	joie	
CHECK BY		
APPD BY		
<b>Rotronic Co., Ltd.</b> ROLINE HDMI to VGA Adapter Cable CUSTOMER : CUSTOMER P/N : 12.03.3114		
SCALE	NONE	DRAWING NO.:
UNIT	MM	
DATE	2013.01.11	
REV. A		1/2