

CATALOG LISTING
YA-2RQ1243-D6

PAGE 1 OF 1

ISSUE
M
 8

REPLACES X74680-YA

RELEASE NO. PR-11329

CHECK

09JAN06

RJ

CHECK

08JUN 82

30JUNE 82

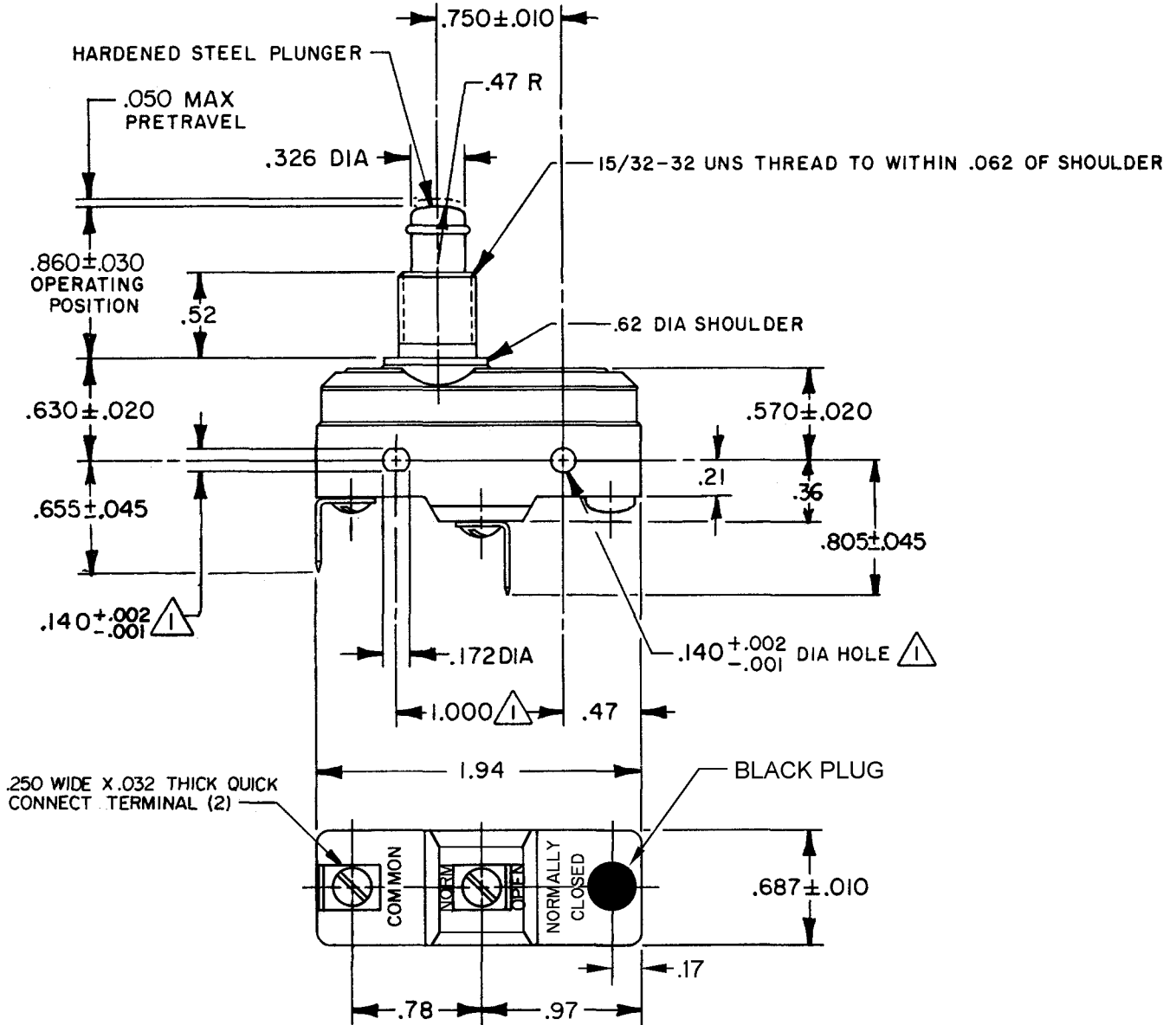
C E B

CHECK

29 JUN 82

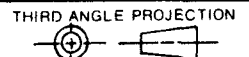
RASTER

DRAWN



- NOTES**
- ① MOUNTING HOLES WILL ACCEPT PINS OR SCREWS OF .139 MAX DIA ON 1.000 ± .002 CENTERS
 - 2 - SWITCH WILL WITHSTAND TEMPERATURES OF 250°F

THIS DRAWING COVERS A PROPRIETARY ITEM AND IS THE PROPERTY OF MICRO SWITCH, A DIVISION OF HONEYWELL. THIS DRAWING IS NOT TO BE COPIED OR USED WITHOUT THE APPROVAL OF MICRO SWITCH.



CHARACTERISTICS

OPERATING FORCE - - - - - 14-22 OZ
 RELEASE FORCE - - - - - 10 OZ MIN
 DIFFERENTIAL TRAVEL - - - .0020-.0075
 OVERTRAVEL - - - - - .219 MIN

ELECTRICAL DATA

CONTACT ARRANGEMENT
 S P N O

20A-125, 250 OR 480 VAC; 10A-125 VAC "L"
 1HP-125 VAC; 2HP-250 VAC
 CODE L23 1/2A-125 VDC; 1/4A-250 VDC

L288
 L308
 L315

CE

20(3)A 250V T85 5E4

SCALE FULL

DO NOT SCALE PRINT

TOLERANCES
 APPLY TO DESIGN UNITS. CONVERSIONS ARE ONLY FOR REFERENCE. UNLESS NOTED, TOLERANCES ARE ±

DIM.	TOL.	DIM.	TOL.
mm	mm/in	in	mm/in
NO PLACES	X	1/04	X X
ONE PLACE	X,X	0.4/.016	X X X
TWO PLACES	X,XX	0.16/.006	X X X X
THREE PLACES	X,XXX	0.038/.016	X X X X X
ANGLES		0.13/.005	

SI METRIC US CUSTOMARY

DESIGN UNITS WEIGHT .093 LB