

logo	BATTERY SPECIFICATION	No : LGC2604036SZ
	Originated by: Date: 10 Mar 2014	Page : 1 of 2 Issue No. : 3 Issue Date : Jun / 17 / 2014

Nominal Ratings : 14.40V 7800mAh, 112.32Wh

Composition : 4S3P LG ICR18650B4 Lithium ion cell with 6.7A protection circuit

NB: Actual voltage and capacity in use will be affected by various factors, including temperature, discharge rate, charge rate and method(if applicable),end point voltage, history(e.g. past use, storage) etc.



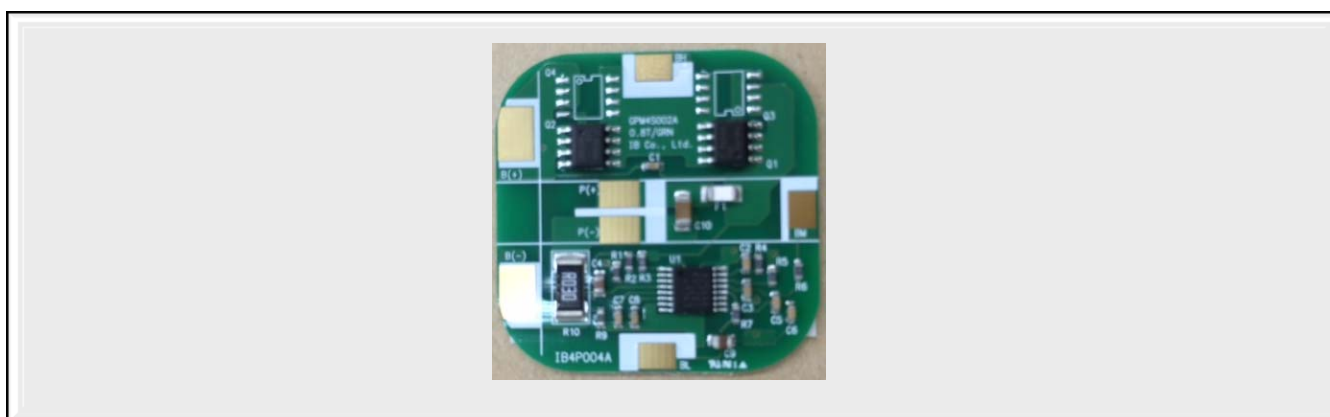
No	Description	Specification	Remark
1	Battery	LG 18650B4	LG CHEM.
2	Capacity	7800 mAh	Nominal Capacity
3	Voltage	14.4V	Nominal Voltage
4	Charging Voltage	16.80V \pm 0.2V	
5	Charging current	3900 mAh	
6	Charging method	CC-CV	
7	Over Current	Continuous : 6.7 A	
8	Weight	Approx 600 g	
9	Size(LxWxD)	120 * 38 * 75	

Mechanical Details:

NB: **All dimensions are max size.** Sleeved packs are not weather proof and are designed to be installed in a protective case or within equipment. They are not intended to be handled by the end user of the equipment and will normally require hard cases before they can be repeatedly inserted and removed.

logo	BATTERY SPECIFICATION	No : LGC2604036SZ
	Originated by: Date: 10 Mar 2014	Page : 1 of 2 Issue No. : 3 Issue Date : Jun / 17 / 2014

Protection Devices:	NB: These devices are designed to protect the pack in the event of control circuit failures e.g. charger failure. They must not be used a main means of charge/discharge control. Protection circuits have response times in the order of a few milliseconds.
----------------------------	---



No	Description	Specification	Remark
1	PCM No.	GPM4S002A	IB Co.,Ltd.
2	Over Charge Protection	4.35V±25mV /each cell	
3	Over Charge Release	4.15V±50mV /each cell	
4	Over Discharge Protection	2.70V±80mV /each cell	
5	Over Discharge Release	3.00V±100mV /each cell	
6	Over Current	6.7A±1.0A	
7	Size (D x W x H)	36.0*36.0*2.8t	
8	Fuse / PTC	7.0A /	
9	Thermal Fuse	None	
10	Bypass diode	None	

Wire:	Approx 120 mm AWG 22 PVC Equipment Wire
Connector	None
Covering	Heat Shrink Tube
Labeling	Standard