

GE
Lighting

GE LED Accent

LED Lighting System



GE imagination at work



Product Features

Add additional lighting layers to highlight your spaces with GE LED Accent Lighting. Decorate objects, trim or accent pieces by skirting with even light uniformity and color consistency. These low profile LED lighting modules work in harmony with other lighting elements and structures to provide subtle emphasis and drama to indoor design elements.

Features & Benefits

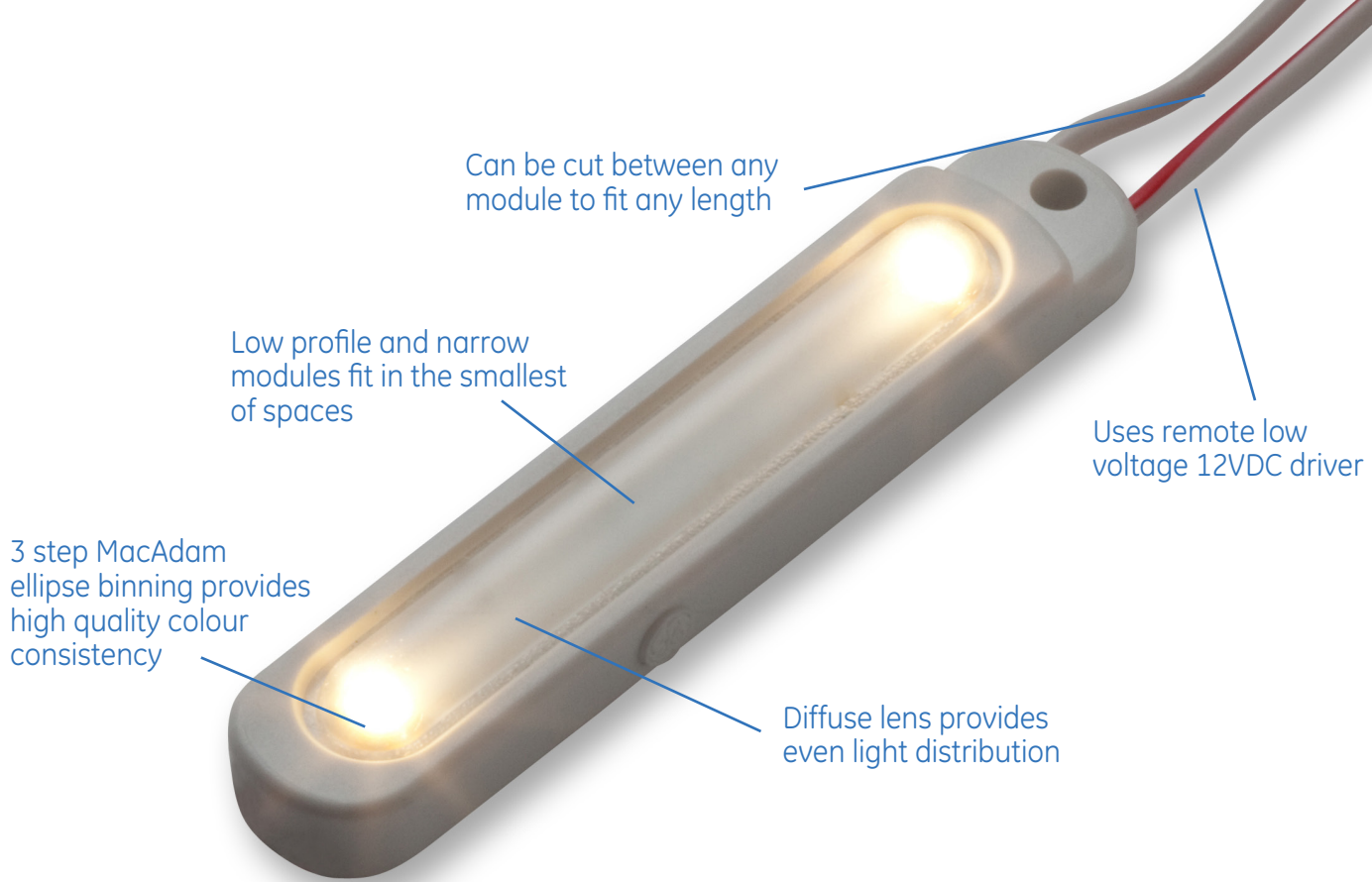
- Uniform light distribution
- Consistent colour with 3 step MacAdam ellipse binning
- Cut between every module for the right length
- Modular, low-voltage 12VDC system for easy installation
- Dimmable with GE 0-10V Dimming LED Driver or GE Dimming Module with GE LED Driver and compatible dimming controller
- IP54, dry or damp location rated
- Optional linear track for straight alignment can be mounted at 0° or 30°

Application

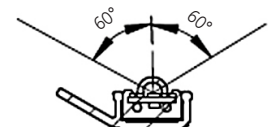
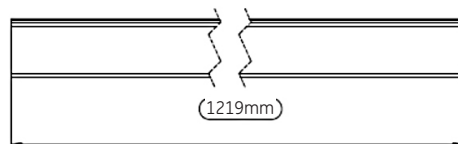
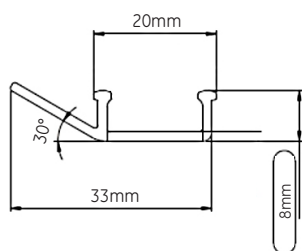
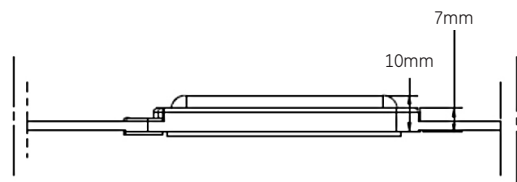
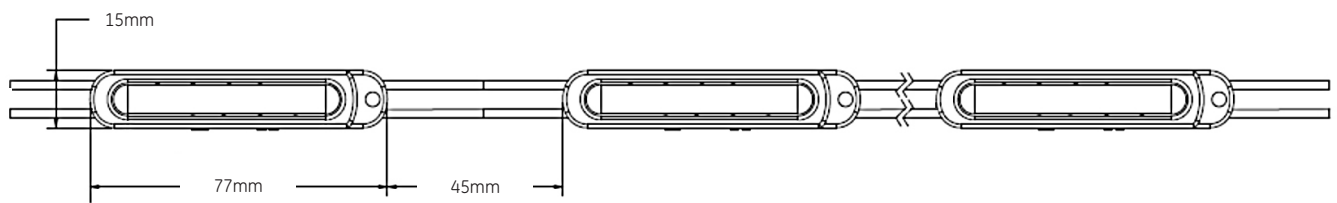
- Small spaces where other lighting technology won't physically fit
- Dramatic light layering with nominal energy consumption

LED Technology

- Long rated life: 50,000 hours
- Energy Efficient
- RoHS Compliant
- 5 year limited warranty
- No UV emissions



Dimensional Drawings



Typical dimensions shown in mm

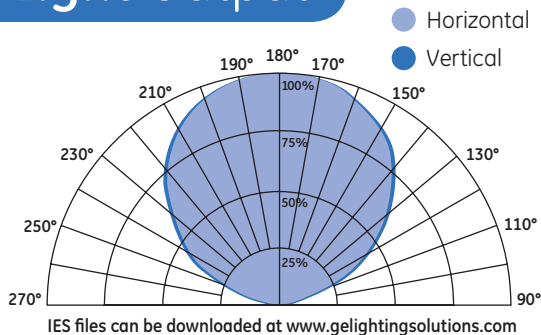
Technical Specifications by SKU

| Product Code | Description Code | CCT+/- | Lens | Strip w/Module (per m) | System w/Module (per m) | Lm/Module | LPW (System) |
|--------------|------------------|-------------------|------|------------------------|-------------------------|--------------|--------------|
| 65456 | NL1-140-827 | 2700K +90 / -40 | 120° | 0.67 (5.49) | 0.84 (6.89) | 27 (68, 221) | 32 |
| 65457 | NL1-140-830 | 3000K +115 / -25 | 120° | 0.67 (5.49) | 0.84 (6.89) | 28 (70, 230) | 33 |
| 65458 | NL1-140-840 | 4000K +121 / -151 | 120° | 0.67 (5.49) | 0.84 (6.89) | 28 (70, 230) | 33 |

Accessories

| Product Code | Description Code | Product Description | Quantity |
|--------------|------------------|---|------------|
| 75514 | 9409 | 18 AWG Supply Wire (0.82 mm ²) | 152.4 m/PK |
| 75545 | 19216004 | 18-14 AWG In-line Splice Connector (0.82-2.08 mm ²) | 152.4 m/PK |
| 75612 | GEDM1-A | Tetra Dimming Module (0-10V) | 1/ea |
| 65459 | NL1-MT48/O | Mounting Track 0° or 30° Angle, 1219mm | 5/PK |
| 74601 | GE060/G/V12T1-A | LED Driver (12VDC/60W); Input Voltage: 90-264VAC; Damp Location Rated | 1/PK |
| 74913 | GE060/MV/V12T1-A | LED Driver (12VDC/60W); Input Voltage: 108-305VAC; Damp Location Rated | 1/PK |
| 74914 | GE020/G/V12T1-B | LED Driver (12VDC/20W); Input Voltage: 90-264VAC; Damp Location Rated | 1/PK |
| 79044 | GE060/MV/D12T1-A | 0-10V Dimming LED Driver (12VDC/60W); Input Voltage: 90-305VAC; Damp Location Rated | 1/PK |

Light Output



| | CANDELA(CD) MEASUREMENTS | | | | | |
|-----|--------------------------|-------|-------|------|-------|------|
| | 4000K | | 3000K | | 2700K | |
| | V | H | V | H | V | H |
| 0° | 10.55 | 10.55 | 9.11 | 9.11 | 9.98 | 10 |
| 10° | 10.5 | 10.47 | 9.2 | 9.03 | 9.94 | 9.98 |
| 20° | 9.97 | 9.98 | 8.73 | 8.63 | 9.42 | 9.46 |
| 30° | 8.92 | 9.14 | 7.76 | 7.94 | 8.36 | 8.39 |
| 40° | 7.73 | 8.11 | 6.61 | 6.96 | 7.14 | 7.17 |
| 50° | 6.24 | 6.99 | 5.19 | 5.86 | 5.71 | 5.73 |
| 60° | 4.48 | 5.62 | 3.72 | 4.61 | 4.11 | 4.13 |
| 70° | 2.55 | 3.92 | 1.73 | 3.16 | 1.89 | 1.9 |
| 80° | 0.95 | 2.04 | 0.73 | 1.62 | 0.8 | 0.81 |
| 90° | 0.13 | 0.36 | 0.08 | 0.28 | 0.03 | 0.03 |

| | CENTER BEAM ILLUMINANCE (LX) | | |
|-------|------------------------------|-------|-------|
| | 4000K | 3000K | 2700K |
| 469.8 | 426.7 | 445.4 | |
| 117.5 | 106.7 | 111.3 | |
| 50.0 | 45.4 | 47.4 | |
| 28.4 | 25.8 | 26.9 | |
| 18.3 | 16.6 | 17.3 | |
| 12.8 | 11.6 | 12.1 | |
| 10.6 | 9.6 | 10.0 | |

| | VERTICAL & HORIZONTAL BEAM WIDTH | |
|-------|----------------------------------|-----|
| | V | H |
| 0.15m | 1.4 | 1.5 |
| 0.30m | 2.8 | 3.1 |
| 0.46m | 4.3 | 4.7 |
| 0.61m | 5.8 | 6.3 |
| 0.76m | 7.2 | 7.8 |
| 0.91m | 8.6 | 9.4 |

Technical Specifications

Operating Voltage: 12VDC System

Driver maximum loading:

20W: 27 modules (3.3 m)

60W: 80 modules (9.8 m)

Dimming: Dimmable with GE 0-10V Dimming LED Driver or GE Dimming Module with GE LED Driver and compatible dimming controller

Module Weight: 0.01kg

Limited Warranty: 5 years

Max remote mounting distance:

60W

15.2 m

22.9 m

38.1 m

68.6 m

Wire size: 18AWG (0.82 mm²)

Modules per ft: 2.5

Modules per Strip: 50 modules (6.1 m)

Ambient Temperature: -40°C to +60°C

CRI: >=80

Environmental Rating: IP54, dry or damp location rated

System Certifications:



Supply Wire Gauge

18 AWG (0.82 mm²) supply wire

16 AWG (1.31 mm²) supply wire

14 AWG (2.08 mm²) supply wire

12 AWG (3.31 mm²) supply wire