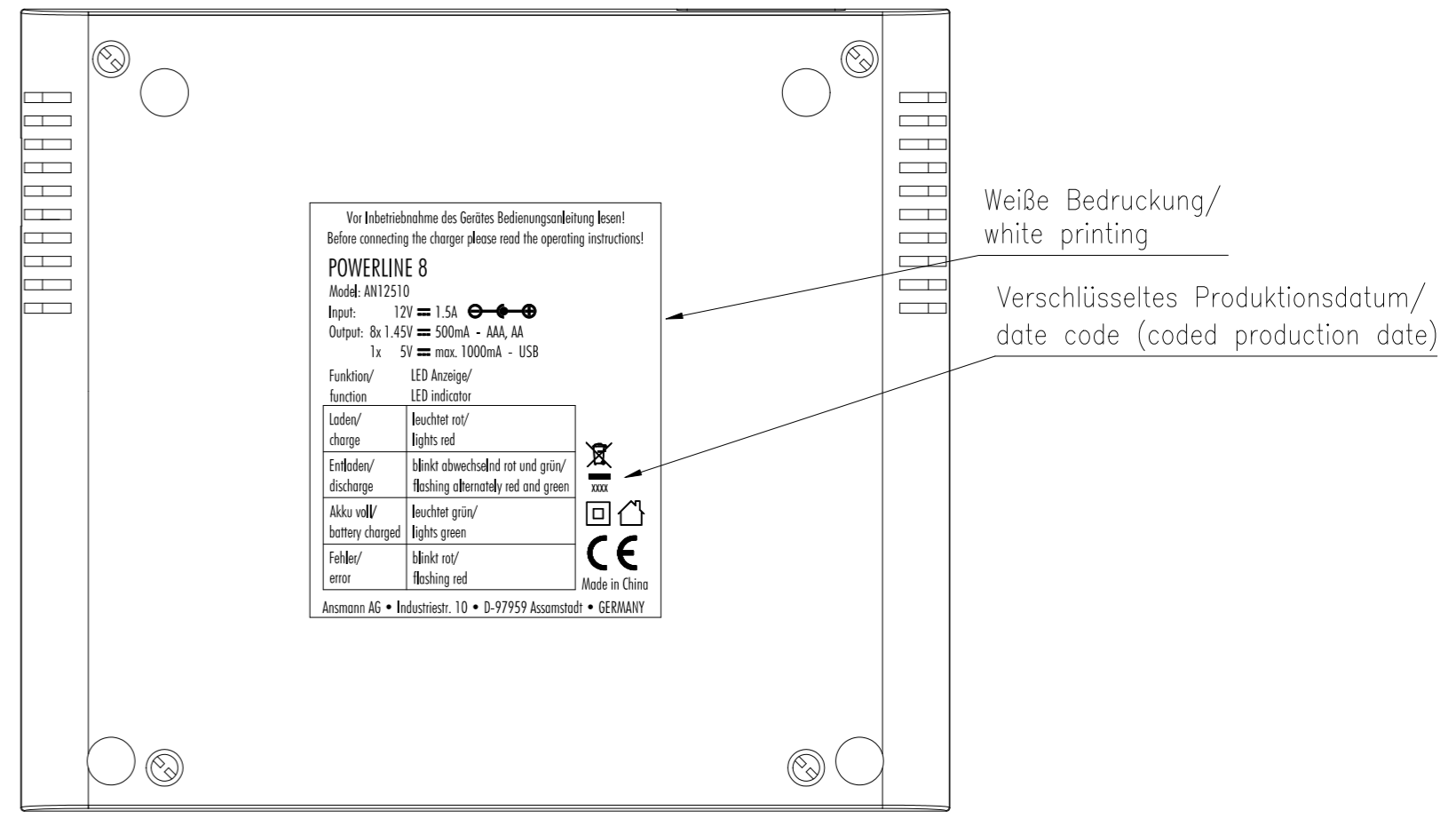
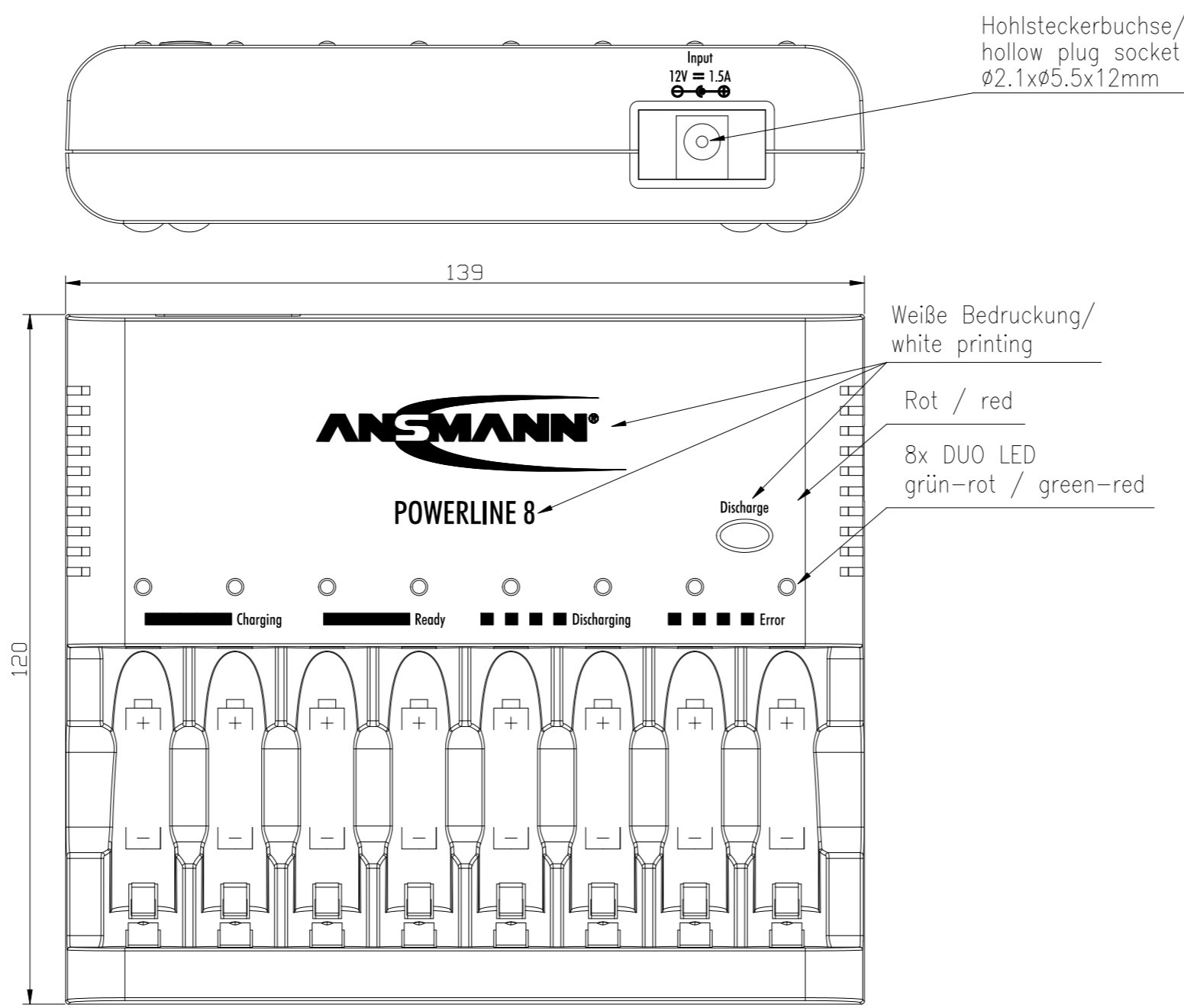
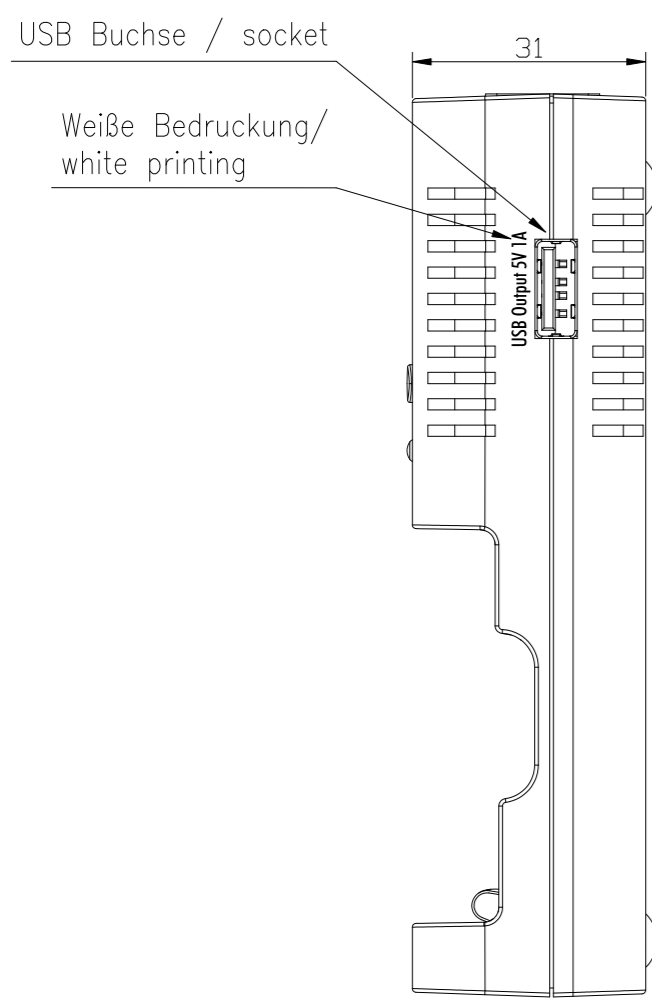


The supplier acknowledges that, with the acceptance of the drawings, he is in a position to manufacture the illustrated part in accordance with the drawings in reproducible form and series production. Through the selected manufacturing processes and materials, which could subsequently lead to an impairment of the components. Verbal agreements over and above that are not valid. Deviations from this rule must be written and must be signed by the purchaser.



Technische Daten Ladegerät / technical data charger

- Eingangsdaten / input data : 12V DC 1.5A
- Ausgangsdaten / output data : 8 x 1.45V = Rundzellen AA oder AAA / cylindrical batteries AA or AAA
- USB Anschluss / USB port : 5V ±5% max. 1000mA
- Ladestrom / charging current : 8x 500mA ±20%
- Entladestrom / discharging current : 8x 200mA ±20%
- Vollerkennung / battery full detection : -dU
- Erhaltungsladung / trickle charge : 25mA ±20%
- Entladeschlussspannung / discharge end voltage : 1V ±5%
- max. Spannung / max. Voltage : für Rundzellen / for cylindric cells 1.75V +10%
- Sicherheitstimer / safety timer : 8h ±15% für Rundzellen / for roundcells
- Ausgangsschutz / output protection : mechanischer Verpolschutz / mechanical reverse-connection protection
- Schutzart / protection : IP20
- Betriebstemperatur / operating temperature : 0°C.....+25°C
- Lagertemperatur / storage temperature : -25°C.....+70°C
- Approbation / approval : CE
- Gehäuse / housing : Tischladegerät / desktop charger
- Gehäusematerial / housing material : ABS
- Gewicht / weight : xxg
- Verpackung / packaging : Blisterverpackung inkl. mehrsprachiger Bedienungsanleitung / blister shell incl. multilingual operating instruction

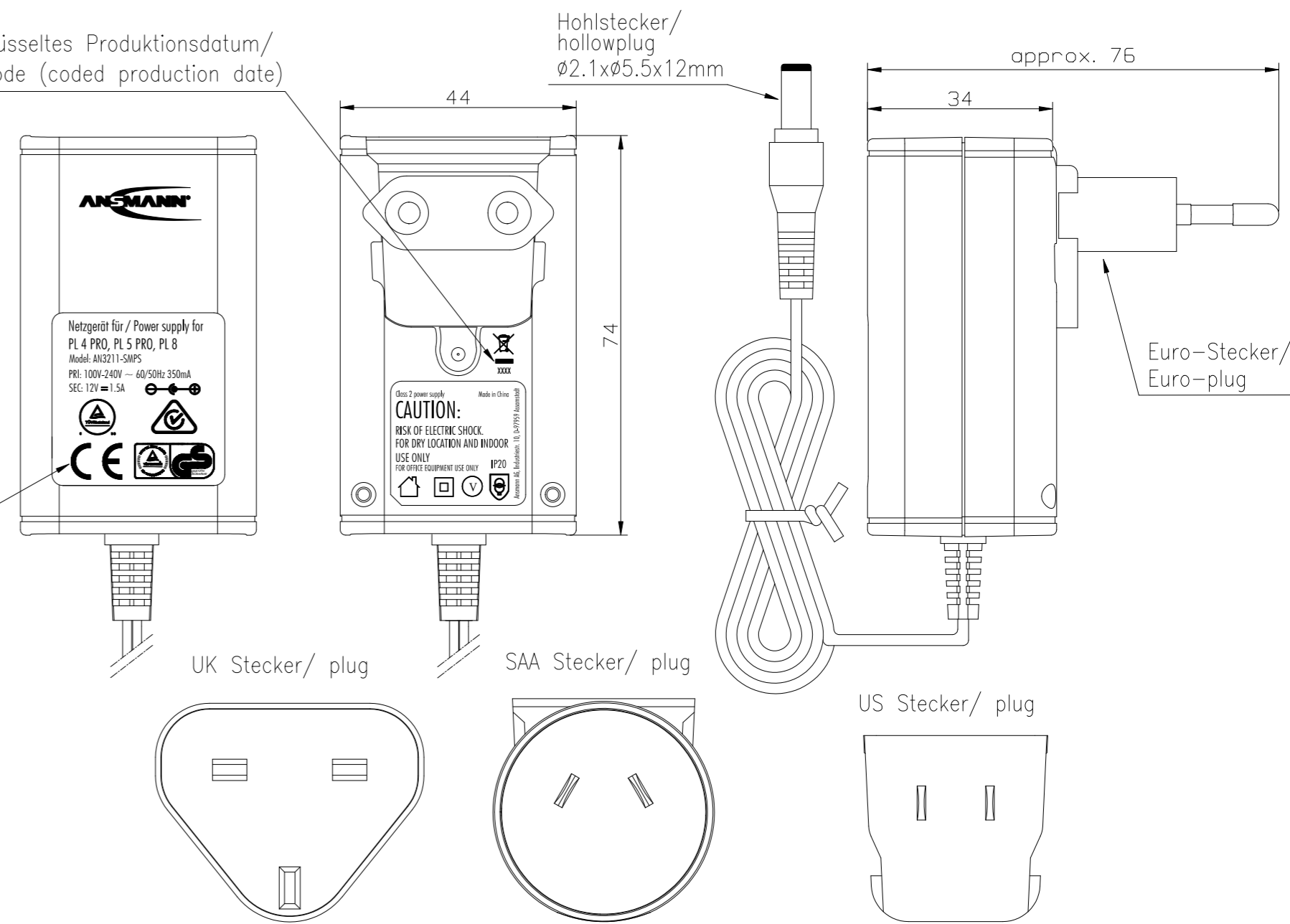
Technische Daten Netzteil / technical data power supply

- Eingangsdaten / input data : 100 - 240V AC ±10% 50/60Hz 350mA
- Ausgangsdaten / output data : 12V DC 1.5A
- Gehäuse / housing : schwarzes Steckergehäuse mit weißer Bedruckung / black plug-in housing with white printing
- Gehäusematerial / housing material : UL94V-0

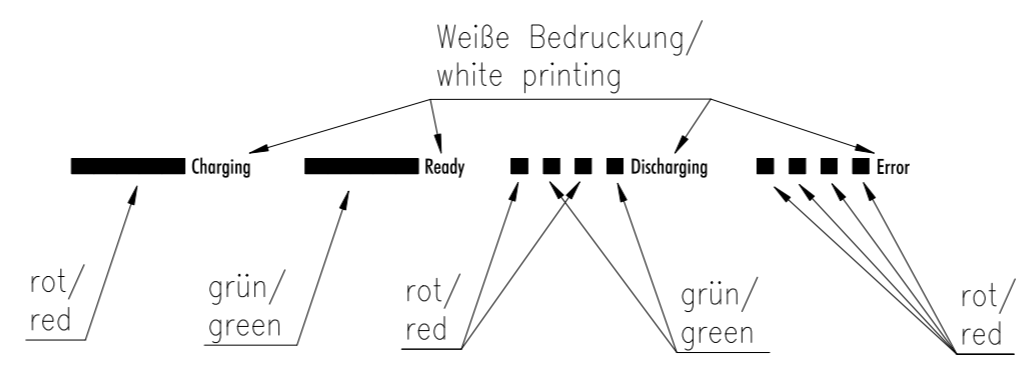
LED Anzeige / LED indication

- Laden / charging : rote LED leuchtet dauerhaft / red LED lights steady
- Erhaltungsladung / trickle charge : grüne LED leuchtet dauerhaft / green LED lights steady
- Entladen / discharging : LED blinkt abwechselnd rot und grün / LED flashing alternately red and green
- Fehler / error : LED blinkt rot / LED flashing red

Verschlüsseltes Produktionsdatum / date code (coded production date)



Schwarzes Label mit weißer Bedruckung / black label with white printing



| | | | | |
|--|---------------------------------------|---------------------------------------|--|-------------------------------------|
| Verwendungsbereich / Application range für Anfrage / for inquiry IS-2014-00499 | Zul. Abweichung / Allowable deviation | Oberfläche / Surface | Maßstab / Scale (DIN A2): 1:1 | Gewicht / Weight |
| | Allgemeintoleranz DIN ISO 2768-m | | Werkstoff / Work material, Modell-Nr. XXXXXXXXXXXXXXXXXXXXXXXX | |
| | 2014 Datum / Date Name | | Zeichnungsname / Drawing name | |
| | Erstellt / Drawn by 10.01. SK | | Powerline 8 | |
| VA --- | 10.01.14 SK | | Zeichnungsnummer / Drawing number Artikelnummer / Part number | Blatt / Sheet 1 |
| Version Änderung / Change | Datum / Date Name | Ursprung / Origin Proj. IS-2014-00499 | Ersatz für / Replaced by | Ersatz durch / Replacement through: |

This drawing may not be copied, reproduced, modified or used without the approval of the supplier.