

JUMO GmbH & Co. KG

Delivery address: Mackenrodtstraße 14
36039 Fulda, Germany
Postal address: 36035 Fulda, Germany
Phone: +49 661 6003-0
Fax: +49 661 6003-607
E-mail: mail@jumo.net
Internet: www.jumo.net

JUMO Instrument Co. Ltd.

JUMO House
Temple Bank, Riverway
Harlow, Essex CM20 2DY, UK
Phone: +44 1279 635533
Fax: +44 1279 635262
E-mail: sales@jumo.co.uk
Internet: www.jumo.co.uk

JUMO Process Control, Inc.

8 Technology Boulevard
Canastota, NY 13032, USA
Phone: 315-697-5866
1-800-554-JUMO
Fax: 315-697-5867
E-mail: info.us@jumo.net
Internet: www.jumousa.com



Bimetal indicator thermometer

industrial version

Particularities

- Stainless steel case
- Class 1
- Display range from -50°C to +500°C
- Protection class max. IP 65
- Case dimensions Ø: 60 mm, 80 mm and 100 mm
- insensitive to ambient temperature

Brief description

Indicator thermometers in industrial version are devices which can be universally used for temperature measurement.



Type 608002/1810

Technical Data

Basic type extensions	0160, 0180, 0110, 1860, 1880, 1810
Case	Case and front ring made of stainless steel, bracket made of aluminum (design 18)
Protection type	IP 54 as per DIN 60529 (IP 65 for extra code 404)
Front pane	Glass (with extra code 404 made of PMMA)
Scale	Polished aluminum, labeled in black
Display	linear, class 1 as per DIN EN 13190
Time behavior	t 0.632 evaluation time approx. 20 s (measured in moving water with a probe Ø of 10 mm made of CrNi)
Influential effect of the ambient temperature	no influence
Limit value temperatures	-30 to +80°C (storage and transport -30 to +80°C)
Rated position	any

Approval / approval marks



JUMO GmbH & Co. KG
 Delivery address: Mackenrodtstraße 14
 36039 Fulda, Germany
 Postal address: 36035 Fulda, Germany
 Phone: +49 661 6003-0
 Fax: +49 661 6003-607
 E-mail: mail@jumo.net
 Internet: www.jumo.net

JUMO Instrument Co. Ltd.
 JUMO House
 Temple Bank, Riverway
 Harlow, Essex CM20 2DY, UK
 Phone: +44 1279 635533
 Fax: +44 1279 635262
 E-mail: sales@jumo.co.uk
 Internet: www.jumo.co.uk

JUMO Process Control, Inc.
 8 Technology Boulevard
 Canastota, NY 13032, USA
 Phone: 315-697-5866
 1-800-554-JUMO
 Fax: 315-697-5867
 E-mail: info.us@jumo.net
 Internet: www.jumousa.com



Technical Data

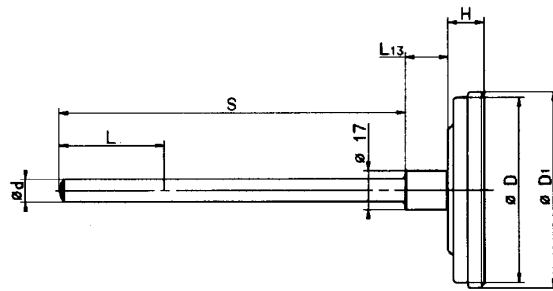
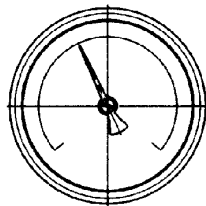
Display range (AB)	Display range in °C	Measuring range in °C	Tolerance in °C
632	-20 to +60	-10 to +60	1.0
643	-20 to +120	0 to to +100	2.0
469	-40 to +40	-30 to +30	1.0
357	-50 to +50	-40 to +40	1,0
810	0 to +80	+10 to +70	1.0
814	0 to +100	+10 to +90	1.0
818	0 to +120	+20 to +100	1.0
832	0 to +200	+20 to +180	2.0
834	0 to +250	+30 to +220	2.5
840	0 to +300	+30 to +270	5.0
848	0 to +400	+50 to +350	5.0
854	0 to +500	+50 to +450	5.0

Dimensions

Types:

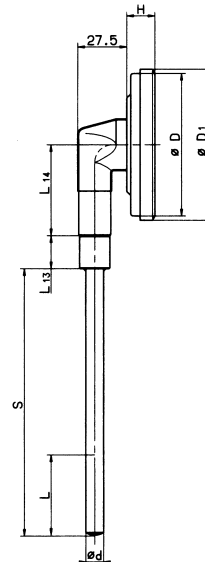
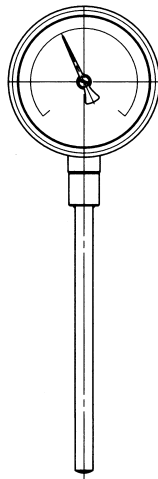
608002/0160
 608002/0180
 608002/0110

Type	Ø D	Ø D ₁	H
608002/0160	60	65	17.5
608002/0180	80	85	18.5
608002/0110	100	106	18.5



Types:

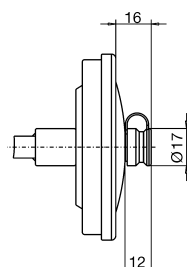
608002/1860
 608002/1880
 608002/1810



Dimensional specifications about Ø d and L₁₃ see data sheet 608730

Extra codes

434



Type	Ø D	Ø D ₁	H	L ₁₄
608002/1860	60	65	17.5	26
608002/1880	80	85	18.5	51
608002/1810	100	106	18.5	51

JUMO GmbH & Co. KG
 Delivery address: Mackenrodtstraße 14
 36039 Fulda, Germany
 Postal address: 36035 Fulda, Germany
 Phone: +49 661 6003-0
 Fax: +49 661 6003-607
 E-mail: mail@jumo.net
 Internet: www.jumo.net

JUMO Instrument Co. Ltd.
 JUMO House
 Temple Bank, Riverway
 Harlow, Essex CM20 2DY, UK
 Phone: +44 1279 635533
 Fax: +44 1279 635262
 E-mail: sales@jumo.co.uk
 Internet: www.jumo.co.uk

JUMO Process Control, Inc.
 8 Technology Boulevard
 Canastota, NY 13032, USA
 Phone: 315-697-5866
 1-800-554-JUMO
 Fax: 315-697-5867
 E-mail: info.us@jumo.net
 Internet: www.jumousa.com



Order details

Order code

608002

(1) Basic type

Mechanical indicator thermometer, industrial version class 1

(2) Basic type extensions

Design 01 Case size Ø

0160



60 mm

0180

80 mm

0110

100 mm

Design 18 Case size Ø

1860



60 mm

1880

80 mm

1810

100 mm

(3) Display range in °C

632	-20 to +60
643	-20 to +120
469	-40 to +40
357	-50 to +50
810	0 to +80
814	0 to +100
818	0 to +120
832	0 to +200
834	0 to +250
840	0 to +300
848	0 to +400
854	0 to +500

(4) Process connection (PC)^b

010	TA 01	Immersion tube with collar	
844	TA 02	Immersion tube with union nut and loose screw-connection ^a	
845	TA 03	Immersion tube with loose union nut	
841	TA 04	Immersion tube with fixed hexagon ^a	
847	TA 06	Immersion tube with displaceable clamping screw-connection (max. 20 bar)	
018	TA 08	Immersion tube with displaceable mounting plate made of galvanized steel and locking screw	
858	SH 04	Single-section screw-in thermowell	
891	SH 05	Multi-sectional screw-in thermowell	
913	SH 07	Multi-sectional screw-in thermowell with locking screw	
820	SH 09	Multi-sectional weld-in thermowell with locking screw	

^a Screw spigot as per DIN 3852 form A (not for NPT threads).

^b For description and particularities refer to data sheet 608730.

JUMO GmbH & Co. KG

Delivery address: Mackenrodtstraße 14
36039 Fulda, Germany
Postal address: 36035 Fulda, Germany
Phone: +49 661 6003-0
Fax: +49 661 6003-607
E-mail: mail@jumo.net
Internet: www.jumo.net

JUMO Instrument Co. Ltd.

JUMO House
Temple Bank, Riverway
Harlow, Essex CM20 2DY, UK
Phone: +44 1279 635533
Fax: +44 1279 635262
E-mail: sales@jumo.co.uk
Internet: www.jumo.co.uk

JUMO Process Control, Inc.

8 Technology Boulevard
Canastota, NY 13032, USA
Phone: 315-697-5866
1-800-554-JUMO
Fax: 315-697-5867
E-mail: info.us@jumo.net
Internet: www.jumousa.com

**(5) Ø Process connection (PC)^b**

6	6 mm	(not with display ranges 628, 564, 807)
10	10 mm	
12	12 mm	(only with SH 05, SH 07)
14	14 mm	(only with SH 05, SH 07, SH 09)
17	17 mm	(only with SH 04)

(6) Thread type of process connection (PC)^b

000	Without thread (only TA 01)
103	Screw connection G 3/8
104	Screw-connection G 1/2
105	Screw-connection G 3/4
144	Screw-connection 1/2-14NPT

(7) Probe material

26	Stainless steel (CrNi, 1.4571)
----	--------------------------------

(8) Material of process connection (PC)^b

26	Stainless steel (CrNi, 1.4571)
----	--------------------------------

(9) Fitting length, process connection (PC) dimension "S"

100	100 mm
150	150 mm
200	200 mm
...	Special length (specifications in plain text - 50 mm steps)

(10) Extra code (EC)

000	Without extra codes
404	IP 65 (only for basic type extension 0160, 0110, 1860, 1810) not with TZ 430
430	Fly back (only with basic type extension 0160, 0180, 0110, 1860, 1880, 1810 - display range min. 100 K)
522	Customized scale

Special versions on request !^a Screw spigot as per DIN 3852 form A (not for NPT threads).^b For description and particularities refer to data sheet 608730.

Order code (1) (2) (3) (4) (5) (6) (7) (8) (9) (10)
 608002 / [] - [] - [] - [] - [] - [] - [] - [] - [] / [] , ...
 Order example 608002 / 0180 - 818 - 845 - 10 - 104 - 26 - 26 - 100 / 000^c , ...

^c State extra codes in sequence, separated by commas.**Stock versions**

Part No.	Type	Display range °C	ø / dimension „S“ or „EL“
80001185	608002/0180-818-847-6-104-26-26-200/000	0 to +120	6 x 200
80001186	608002/0180-834-847-6-104-26-26-200/000	0 to +250	6 x 200

Delivery within 3 working days after receipt of order