

ENCLOSURE FOR COMMAND DEVICES, 22MM,  
 ROUND, ENCLOSURE MATERIAL METAL,  
 ENCLOSURE TOP PART GRAY,  
 1 COMMAND POSITION, UNEQUIPPED,  
 FLOOR MOUNTING,  
 1 X M20 EACH AT TOP AND BOTTOM

**Enclosure:**

<b>Design of the enclosure</b>		Empty enclosure for command and signaling devices
<b>Material / of the enclosure</b>		metal
<b>Color / of top part of the enclosure</b>		grey
<b>Number of Command Points</b>		1
<b>Product component / protective collar</b>		No
<b>Form / of the enclosure front</b>		Square
<b>Design of electrical connection / on enclosure</b>		Cable routing above, below / left, right, each 1 x M20
<b>Mounting type / of enclosure</b>		Vertical / horizontal
<b>Product function / EMERGENCY STOP function</b>		No

**Actuato/ signaling device:**

<b>Product component / front ring</b>		No
---------------------------------------	--	----

**Contact block/ lampholder:**

<b>Product function / positive opening</b>		No
<b>Mounting type / of contact blocks, socket, and accessories</b>		Floor mounting / front mounting (1-pole)
<b>Product component / fluorescent materials</b>		No
<b>Product extension / optional / fluorescent materials</b>		Yes

**Accessories:**









<b>Number of labeling plates</b>		1
<b>Product component / holder for 3 switching elements</b>		No

**General technical details:**

<b>Delivery state / pre-wired on strip terminal</b>		No
<b>Product component / stand/pedestal</b>		No
<b>Resistance against shock</b>		
<ul style="list-style-type: none"> <li>• for devices with incandescent lamp / according to IEC 60068-2-27</li> <li>• for devices without incandescent lamp / according to IEC 60068-2-27</li> </ul>		<p>&lt;= 30g</p> <p>&lt;= 50g</p>

<b>Resistance against vibration / according to IEC 60068-2-6</b>		20 ... 200 Hz: 5g
<b>Reference code</b>		U S
<ul style="list-style-type: none"> <li>• according to DIN EN 61346-2</li> <li>• according to DIN 40719 extended according to IEC 204-2 / according to IEC 750</li> </ul>		
<b>Ambient temperature</b>		
<ul style="list-style-type: none"> <li>• during operating</li> <li>• during storage</li> </ul>	°C	-25 ... +70
	°C	-40 ... +80
<b>Protection class IP</b>		IP67
<b>climatic class / during the operating phase / according to EN 60721</b>		3K6
<b>Shape / of the installation hole</b>		round
<b>Mounting diameter</b>	mm	22
<b>Width</b>	mm	85
<b>Height</b>	mm	85
<b>Depth</b>	mm	65

#### Certificates/ approvals:

<b>General Product Approval</b>	<b>Declaration of Conformity</b>	<b>Test Certificates</b>
 CSA  EAC  UL	 CE EG-Konf.	<a href="#">Special Test Certificate</a>
<b>Shipping Approval</b>	<b>other</b>	
 ABS  DNV  LRS  PRS	<a href="#">Confirmation</a> <a href="#">Environmental Confirmations</a>	

#### Further information:

##### Information- and Downloadcenter (Catalogs, Brochures,...)

<http://www.siemens.com/industrial-controls/catalogs>

##### Industry Mall (Online ordering system)

<http://www.siemens.com/industrial-controls/mall>

##### Cax online generator

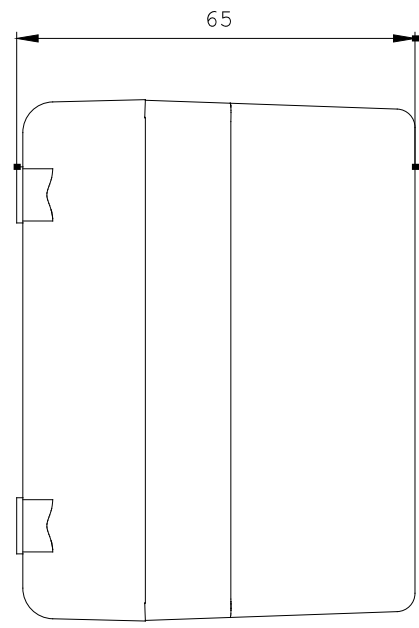
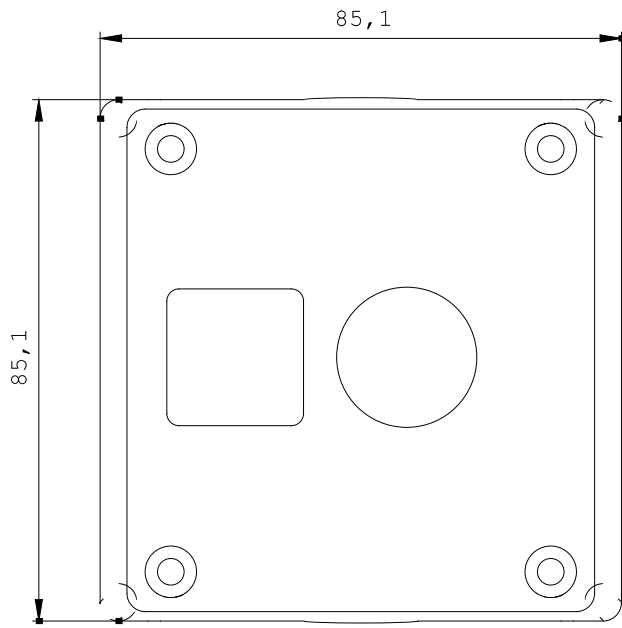
<http://www.siemens.com/cax>

##### Service&Support (Manuals, Certificates, Characteristics, FAQs,...)

<http://support.automation.siemens.com/WWW/view/en/3SB3801-2AA3/all>

##### Image database (product images, 2D dimension drawings, 3D models, device circuit diagrams, ...)

[http://www.automation.siemens.com/bilddb/cax\\_en.aspx?mlfb=3SB3801-2AA3](http://www.automation.siemens.com/bilddb/cax_en.aspx?mlfb=3SB3801-2AA3)



\W9.4444;  
\W9.25; 3SB3801-2AA3\_ALL

**last change:**

Jul 7, 2014