

MATERIALS AND FINISHES

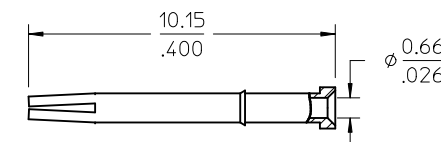
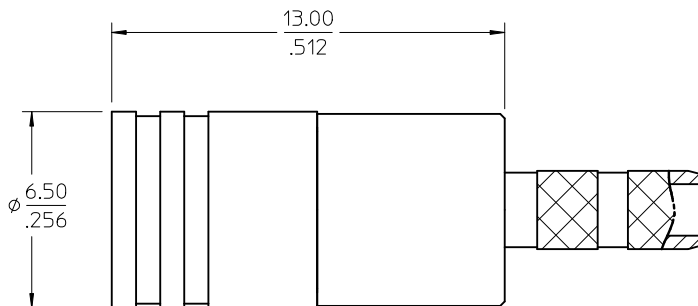
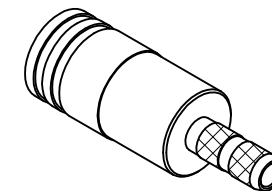
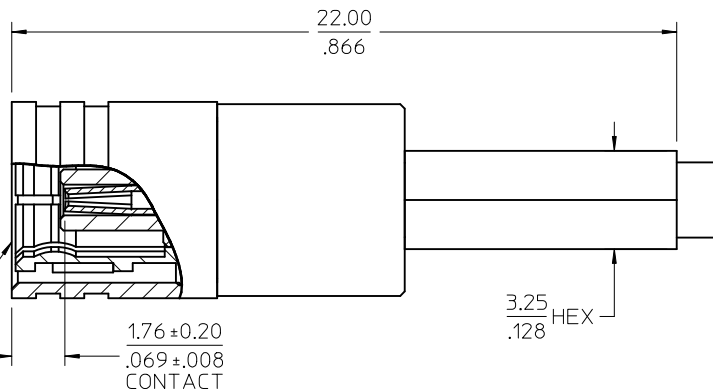
BODY, FERRULE: BRASS
PLATED GOLD

CENTER CONTACT: BERYLLIUM COPPER
PLATED GOLD

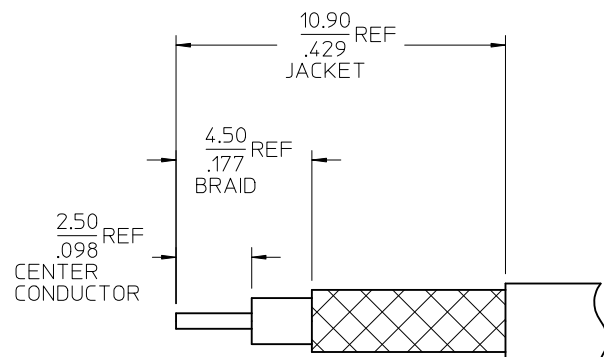
INSULATOR: TEFLON

RETAINING RING: BERYLLIUM COPPER

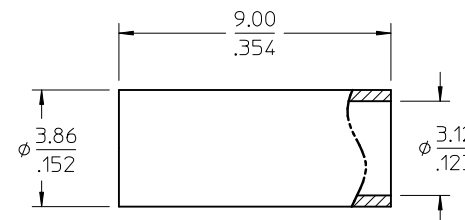
SMB PLUG
INTERFACE



CENTER CONTACT



RECOMMENDED CABLE STRIP



FERRULE

73396-0600	SMALL TRAY PACKING
73404-2310	73100-0248, ONE PER BAG
73100-0248	TRAY
PART NO.	PACKAGING

PS-89675-3540	ELECTRO/MECH PERFORM.
SPECIFICATION	DESCRIPTION

CHG: ADD INTERFACE
DIMENSION
PS WAS 73598-0099

EC NO: URF2011-0323
DRWN: JWIENER 2010/12/06
CHKD: SSS 2010/12/06
APPR: JWIENER 2010/12/07

QUALITY
SYMBOLS
▽=0
▽=0

GENERAL TOLERANCES
(UNLESS SPECIFIED)

	mm	INCH
4 PLACES	± .005	± .0005
3 PLACES	± .003	± .0003
2 PLACES	± .002	± .0002
1 PLACE	± .001	± .0001

ANGULAR ± 2 °

DRAFT WHERE APPLICABLE
MUST REMAIN
WITHIN DIMENSIONS

DIMENSION STYLE
MM/IN

DRAWN BY DATE
FIELDS 1995/08/10

CHECKED BY DATE

APPROVED BY DATE
JWIENER 2010/12/07

MATERIAL NO.
SEE TABLE

SIZE
C

SCALE
DESIGN UNITS
METRIC

THIRD ANGLE
PROJECTION

TITLE
SMB PLUG STR FOR RG316
CABLE 50 OHMS
SMB-PC

MOLEX INCORPORATED

DOCUMENT NO.
SD-73100-0248

SHEET NO.
1 OF 1