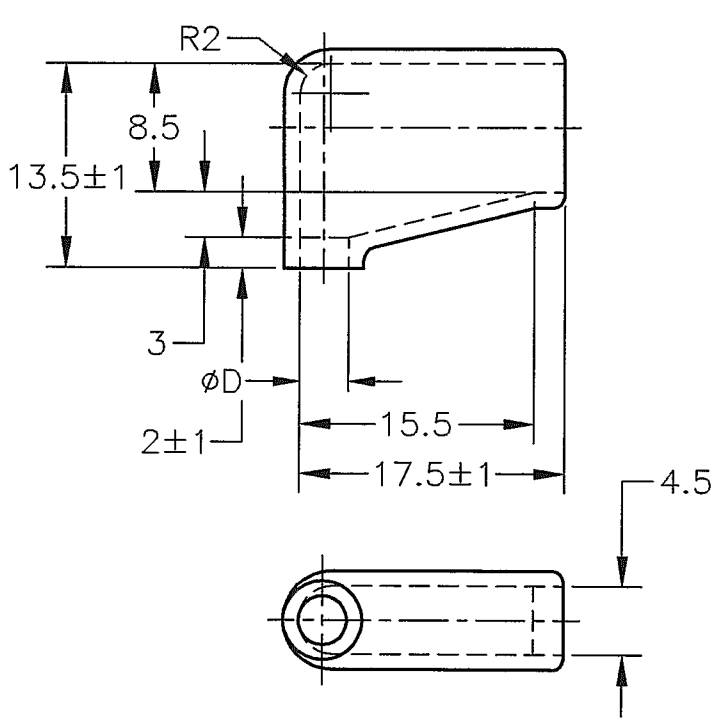


LOC	DIST	REVISIONS 変更						
J	-	P	LTR	DESCRIPTION	ECN	DATE	DWN	APVD
		B		REVISED FJDO-0359-04		7 OCT '04	Y.Y	N.Y



X-170892-X	SEE 170892
X-170893-X	SEE 170893
X-170887-X	SEE 170887
X-170889-X	SEE 170889
X-170888-X	SEE 170888
X-170890-X	SEE 170890
X-170823-X	SEE 170823
AMP PN	REMARK

- 1. 材質：SS-108（一般）
- 2. 一般公差：±0.5
- 3. 適用製品規格は無し
- △ 品川商工発行のカタログと本図で寸法が異なる場合は本図を優先する。

- 1. MATERIAL:SS-108(GENERAL)
- 2. GENERAL TOLERANCE: ±0.5
- 3. APPLICABLE PRODUCT SPEC NOT AVAILABLE
- △ IN THE EVENT OF CONFLICT BETWEEN THE REQUIREMENTS OF THIS CUSTOMER DRAWING AND THE SHINAGAWA SHOKO CO LTD CATALOG THIS CUSTOMER DRAWING SHALL TAKE PRECEDENCE

CLEAR	1± 0.3	4.8	248548	170891-2
		3.2	248532	170891-1
COLOR	THICKNESS	φD	SHINAGAWA SHOKO PN	AMP PN

THIS DRAWING IS UNPUBLISHED. ALL RIGHTS RESERVED. BY TYCO ELECTRONICS CORPORATION.

DIMENSIONS: 単位： 精 mm	
TOLERANCES UNLESS OTHERWISE SPECIFIED: 一般公差	
0 PLC	± -
1 PLC	± -
2 PLC	± -
3 PLC	± -
4 PLC	± -
ANGLES	± -

DWN	31 AUG 00	A.YAMAGUCHI
CHK	31 AUG 00	D.MATSUURA
APVD	31 AUG 00	K.BETSUI
PRODUCT SPEC	製品規格	
APPLICATION SPEC	取付適用規格	
WEIGHT		

WIRE RANGE 包含電線断面積		INSULATION DIA 被覆外径	
-		-	
MATERIAL 材料		FINISH 仕上	
-		-	
Tyco Electronics AMP K.K. Kawasaki, Japan			
NAME 名称 FLAG TYPE CONNECT SLEEVE FOR 250 SERIES			
SIZE	CAGE CODE	DRAWING NO 番号	RESTRICTED TO
A4	00779	170891	-