

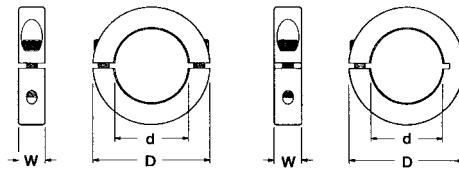


COLLARS AND RIGID COUPLINGS



Clamp Collars

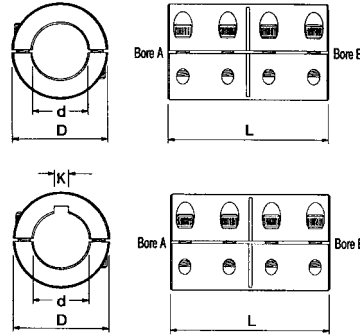
Huco Clamp Collars are designed for ease of installation and adjustment. They are equally effective on plain or hardened shafts and, unlike set screw collars do not leave indentations on the shaft.



Order Codes				Dimensions				
One Piece Clamp Collars		Two Piece Clamp Collars		Bore d	Outside Diameter D	Width W	Clamp Screw	Recommended Max. Screw Torque (Nm)
Steel	Stainless Steel	Steel	Stainless Steel					
046101003	046102003	046201003	046202003	3	16	9	M3 x 8	2.1
046101004	046102004	046201004	046202004	4	16	9	M3 x 8	2.1
046101005	046102005	046201005	046202005	5	16	9	M3 x 8	2.1
046101006	046102006	046201006	046202006	6	16	9	M3 x 8	2.1
046101007	046102007	046201007	046202007	7	18	9	M3 x 8	2.1
046101008	046102008	046201008	046202008	8	18	9	M3 x 8	2.1
046101009	046102009	046201009	046202009	9	24	9	M3 x 10	2.1
046101010	046102010	046201010	046202010	10	24	9	M3 x 10	2.1
046101011	046102011	046201011	046202011	11	28	11	M4 x 12	4.6
046101012	046102012	046201012	046202012	12	28	11	M4 x 12	4.6
046101013	046102013	046201013	046202013	13	30	11	M4 x 14	4.6
046101014	046102014	046201014	046202014	14	30	11	M4 x 14	4.6
046101015	046102015	046201015	046202015	15	34	13	M5 x 16	9.5
046101016	046102016	046201016	046202016	16	34	13	M5 x 16	9.5
046101017	046102017	046201017	046202017	17	36	13	M5 x 16	9.5
046101018	046102018	046201018	046202018	18	36	13	M5 x 16	9.5
046101019	046102019	046201019	046202019	19	40	15	M6 x 16	16
046101020	046102020	046201020	046202020	20	40	15	M6 x 16	16
046101021	046102021	046201021	046202021	21	42	15	M6 x 16	16
046101022	046102022	046201022	046202022	22	42	15	M6 x 16	16
046101023	046102023	046201023	046202023	23	45	15	M6 x 16	16
046101024	046102024	046201024	046202024	24	45	15	M6 x 16	16
046101025	046102025	046201025	046202025	25	45	15	M6 x 16	16
046101026	046102026	046201026	046202026	26	48	15	M6 x 16	16
046101028	046102028	046201028	046202028	28	48	15	M6 x 16	16
046101030	046102030	046201030	046202030	30	54	15	M6 x 18	16
046101032	046102032	046201032	046202032	32	54	15	M6 x 18	16
046101034	046102034	046201034	046202034	34	57	15	M6 x 18	16
046101035	046102035	046201035	046202035	35	57	15	M6 x 18	16
046101036	046102036	046201036	046202036	36	57	15	M6 x 18	16
046101038	046102038	046201038	046202038	38	60	15	M6 x 18	16
046101040	046102040	046201040	046202040	40	60	15	M6 x 18	16
046101042	046102042	046201042	046202042	42	73	19	M8 x 25	39
046101045	046102045	046201045	046202045	45	73	19	M8 x 25	39
046101048	046102048	046201048	046202048	48	78	19	M8 x 25	39
046101050	046102050	046201050	046202050	50	78	19	M8 x 25	39

Rigid Couplings

Huco one and two-piece rigid couplings provide reliable holding power and maintain alignment. Easy installation and adjustment. One-piece couplings supplied with 4 screws. Two-piece couplings supplied with 8 screws.



Order Codes				Dimensions				
One Piece Clamp Collars		Two Piece Clamp Collars		Bores (d) A	Bores (d) B	D	L	Forged Clamp Screw
Steel	Stainless Steel	Steel	Stainless Steel					
046501006	046502006	046601006	046602006	6	6	18	30	M3 x 8
046501008	046502008	046601008	046602008	8	8	24	35	M3 x 10
046501010	046502010	046601010	046602010	10	10	29	45	M4 x 12
046501012	046502012	046601012	046602012	12	12	29	45	M4 x 12
046501014	046502014	046601014	046602014	14	14	34	50	M5 x 16
046501015	046502015	046601015	046602015	15	15	34	50	M5 x 16
046501016	046502016	046601016	046602016	16	16	35	50	M5 x 16
046501020	046502020	046601020	046602020	20	20	42	65	M6 x 16
046501025	046502025	046601025	046602025	25	25	45	75	M6 x 16
046501030	046502030	046601030	046602030	30	30	53	83	M6 x 18
046501035	046502035	046601035	046602035	35	35	67	95	M8 x 25
046501040	046502040	046601040	046602040	40	40	77	108	M6 x 16
046501050	046502050	046601050	046602050	50	50	85	124	M10 x 25

• Alternative bore sizes and keywayed bore available to special order

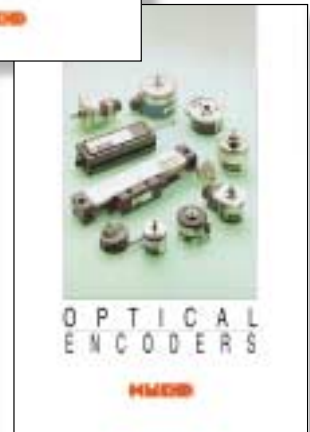
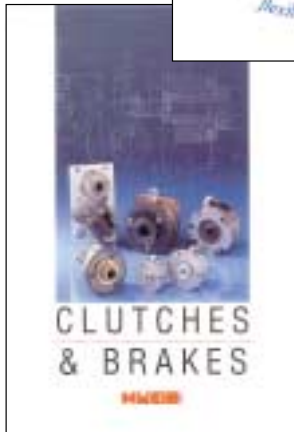
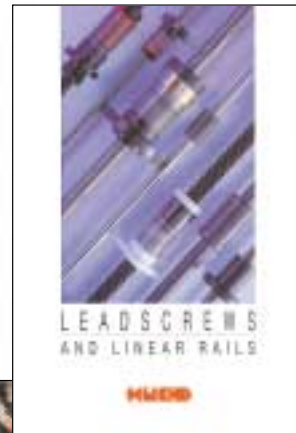
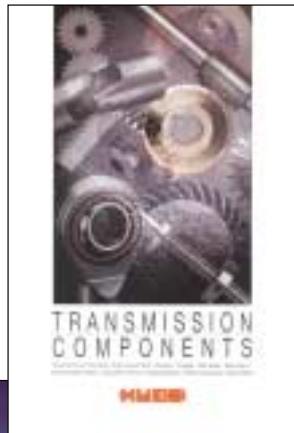
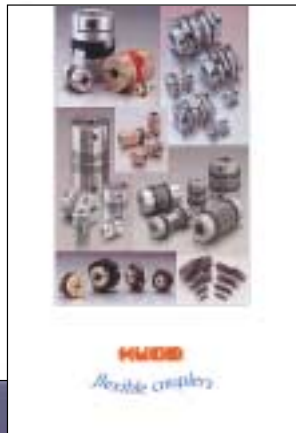


Quality components from a reliable source

Our wide range of top-quality clamp collars and rigid couplings are made to the most stringent industry standards at a competitive price ...for all-round value.

At Huco our friendly and well trained sales team will serve you with unrivalled efficiency.

Other Quality Products from Huco



Please call 01992 509888 for any of our brochures



Huco Engineering Industries Ltd,
Merchant Drive, Hertford, Herts SG13 7BL

Tel: +44 (0) 1992 509888 Fax: +44 (0) 1992 509890 Email: sales@huco.com

www.huco.com