



igubal®
Flange Bearings

Phone +44 (0) 16 04 - 67 72 40
Fax +44 (0) 16 04 - 67 72 45

igus® UK Ltd

Internet www.igus.co.uk
E-mail sales_uk@igus.co.uk

igubal® Flange Bearings – Dimensional Series



Like all igubal® products, these bearings consist of an igumid G housing and an iglidur® W300 spherical ball. igubal® flange bearings are made to the dimensional series E and are offered with two or four mounting holes.

Areas of Application

Since igubal® flange bearings are made for maintenance-free use, they are especially suitable for applications in which access to the bearing is limited, in moist or wet environments or clean room environments. igubal® flange bearings are also found in electric brushes, awnings, conveyor technology, and bakery machines.

Installation

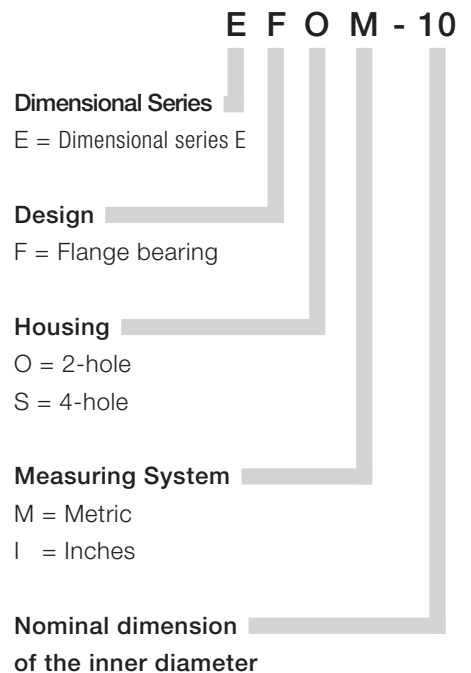
igubal® flange bearings are designed for mounting with 2 or 4 bolts, depending on the design. The 2-hole types are provided with elongated holes, which allow easy and flexible installation. An exact positioning of the bearing housing is not necessary, since the flange bearing compensates for alignment errors.

Product Range

igubal® flange bearings with 2 and 4 mounting holes can be obtained in the standard dimensions for shafts of 4 to 50 mm. Please contact us for additional dimensions.

Structure for Part Numbers of igubal® Flange Bearings

The part numbers of igubal® flange bearings are designed according to the following system:



The example shows a metric 2-hole flange bearing of the dimensional series E with a spherical ball inner diameter of 10 mm.



EFSM

mm

Flange Bearings

Phone +44 (0) 1604 - 677240
Fax +44 (0) 1604 - 677245

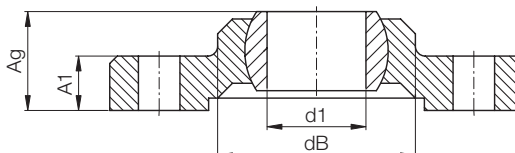
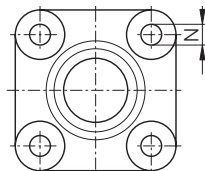
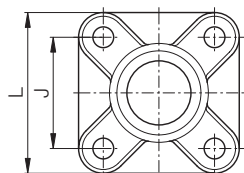
igus® UK Ltd

Internet www.igus.co.uk
E-mail sales_uk@igus.co.uk

54.6



With 4 mounting holes



Data in mm

Structure – part no.

E F S M-04



Material

Housing: igumid G

► Page 70.6

Spherical Bearing:

iglidur® W300

► Chapter 5

Load Data

igubal® – Flange Bearing EFSM with 4 Mounting Holes

Part Number	Maximum static axial load [N] short term	Maximum static axial load [N] long term	Maximum static radial load [N] short term	Maximum static radial load [N] long term
EFSM-04	200	100	1000	500
EFSM-05	300	150	1000	500
EFSM-06	300	150	1000	500
EFSM-08	450	225	1400	700
EFSM-10	700	350	2000	1000
EFSM-12	850	425	2500	1250
EFSM-15	1100	550	3000	1500
EFSM-16	1350	675	3200	1600
EFSM-17	1600	800	3400	1700
EFSM-20	2000	1000	4000	2000
EFSM-25	2400	1200	5600	2800
EFSM-30	2800	1400	6000	3000

Dimensions [mm]

igubal® – Flange Bearing EFSM with 4 Mounting Holes

Part Number	d1 E10	dB	L Width	J Hole Pitch ±0,1	A1 Height of Plate	Ag Height Total	N Bore Diameter
EFSM-04	4	14,0	25,0	17,0	4,5	8,5	3,2
EFSM-05	5	14,0	25,0	17,0	4,5	8,5	3,2
EFSM-06	6	14,0	25,0	17,0	4,5	8,5	3,2
EFSM-08	8	18,0	33,0	22,0	5,5	10,5	4,3
EFSM-10	10	22,0	38,0	26,0	6,5	12,0	5,3
EFSM-12	12	25,0	40,0	28,0	7,0	13,0	5,3
EFSM-15	15	30,0	49,0	34,0	8,5	15,5	6,4
EFSM-16	16	32,5	52,0	36,0	9,0	16,5	6,4
EFSM-17	17	35,0	54,0	38,0	10,0	18,0	6,4
EFSM-20	20	40,0	65,0	45,0	11,0	20,0	8,4
EFSM-25	25	48,5	74,0	52,0	14,0	25,0	8,4
EFSM-30	30	55,0	85,0	60,0	15,0	26,0	10,5

Available from Stock

Clearance-free spherical ball, optional



JVEM: Clearance-free spherical ball

► Page 57.6