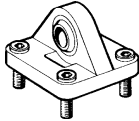


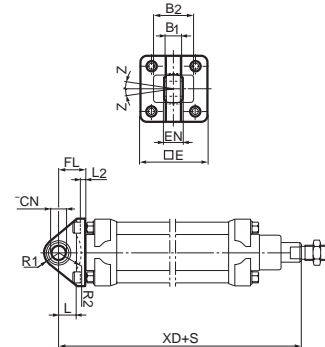
## Cylinder mountings

Type	Description	Cyl. bore Ø mm	Weight kg	Order code
<b>Swivel eye bracket</b> 	Intended for use together with clevis bracket GA	32	0,20	<b>P1C-4KMS</b>
		40	0,30	<b>P1C-4LMS</b>
		50	0,50	<b>P1C-4MMS</b>
		63	0,70	<b>P1C-4NMS</b>
		80	1,20	<b>P1C-4PMS</b>
		100	1,60	<b>P1C-4QMS</b>
		125	1,80	<b>P1C-4RMS</b>
	Material Bracket: Surface-treated steel, black Swivel bearing acc. to DIN 648K: Hardened steel			
	Supplied complete with mounting screws for attachment to cylinder.			

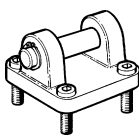
According to VDMA 24 562 T.2/13-, AFNOR

Cyl. bore mm	E mm	B1 mm	B2 mm	EN mm	R1 mm	R2 mm	FL mm	I2 mm	L mm	CN H7 mm	XD mm	Z °
32	45	10,5	-	14	16	-	22	5,5	12	10	142	4°
40	52	12	-	16	18	-	25	5,5	15	12	160	4°
50	65	15	51	21	21	19	27	6,5	15	16	170	4°
63	75	15	-	21	23	-	32	6,5	20	16	190	4°
80	95	18	-	25	29	-	36	10	20	20	210	4°
100	115	18	-	25	31	-	41	10	25	20	230	4°

S = Stroke length



## Clevis bracket MP2



Intended for flexible mounting of cylinder. Clevis bracket MP2 can be combined with clevis bracket MP4.

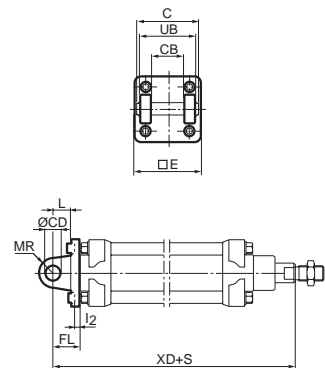
Materials  
Clevis bracket: Surface-treated aluminium, black  
Pin: Surface hardened steel  
Circlips according to DIN 471: Spring steel  
Mounting screws acc. to DIN 912: Zinc-plated steel 8.8

Supplied complete with mounting screws for attachment to cylinder.

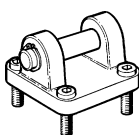
According to ISO MP2, VDMA 24 562 T.2/3-, AFNOR

Cyl. bore mm	C mm	E mm	UB h14 mm	CB H14 mm	FL ±0,2 mm	L mm	I2 mm	CD H9 mm	MR mm	XD mm
32	53	45	45	26	22	13	5,5	10	10	142
40	60	52	52	28	25	16	5,5	12	12	160
50	68	65	60	32	27	16	6,5	12	12	170
63	78	75	70	40	32	21	6,5	16	16	190
80	98	95	90	50	36	22	10	16	16	210
100	118	115	110	60	41	27	10	20	20	230
125	139	140	130	70	50	30	10	25	25	275

S = Stroke length



## Clevis bracket MP2 with stainless steel pin



Intended for flexible mounting of cylinder. Clevis bracket MP2 can be combined with clevis bracket MP4.

Materials  
Clevis bracket: Surface-treated aluminium, black  
Pin: Stainless steel  
Circlips according to DIN 471: Stainless steel  
Mounting screws acc. to DIN 912: Stainless steel  
O-ring, NBR

Supplied complete with mounting screws for attachment to cylinder.

Dimensions acc. to MP2 above.

32	0,04	<b>9301054371</b>
40	0,10	<b>9301054372</b>
50	0,18	<b>9301054373</b>
63	0,25	<b>9301054374</b>
80	0,60	<b>9301054375</b>
100	0,70	<b>9301054376</b>
125	1,30	<b>9301054377</b>