

Number of contacts
 15
 14 + 1 leading contact
 (position z 32)
 13 + 2 leading contacts
 (position z 4 und z 32)
 3

Working current 15 A max.
 see current carrying capacity chart

Clearance $\geq 4.5 \text{ mm}^*$

Creepage $\geq 8.0 \text{ mm}^*$

Working voltage
 The working voltage also depends on the clearance and creepage dimensions of the pcb itself and the associated wiring according to the safety regulations of the equipment Explanations see chapter 00

Connectors should not be mated under voltage

Test voltage $U_{r.m.s.}$ 3.1 kV*

Contact resistance $\leq 8 \text{ m}\Omega$

Insulation resistance $\geq 10^{12} \Omega$

Temperature range $-65 \text{ }^\circ\text{C} \dots +125 \text{ }^\circ\text{C}$
 The higher temperature limit includes the local ambient and heating effects of the contacts under load

Electrical termination

Male connector Connector with faston 6.3 x 2.5 (faston blade width x wire gauge) according to DIN 46 245 and DIN 46 247
 Solder pins for pcb connections $\varnothing 1.6 \pm 0.1 \text{ mm}$ DIN EN 60 097

Female connector Connector for faston 6.3 x 2.5 (faston blade width x wire gauge) according to DIN 46 245 and DIN 46 247
 Solder pins for pcb connections $\varnothing 1.6 \pm 0.1 \text{ mm}$ DIN EN 60 097
 Cage clamp terminal 0.14-1.5 mm²

Insertion and withdrawal force $\leq 90 \text{ N}$

Materials

Mouldings Thermoplastic resin, glass-fibre filled, UL 94-V0

Contacts Copper alloy

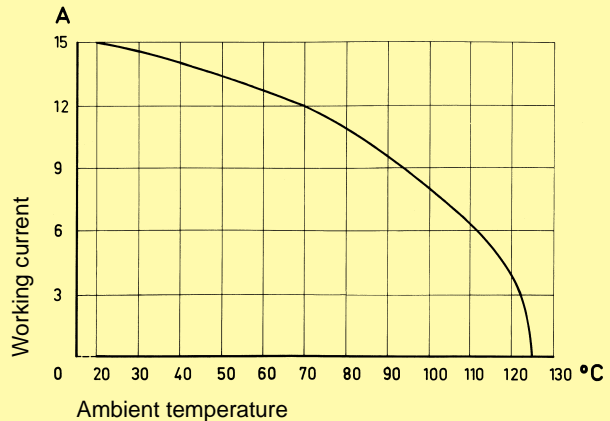
Contact surface Hard silver plated, gold plated on request terminal ends of female connectors tinned

Mating conditions see chapter 00
 Coding systems see page 03.26

Current carrying capacity

The current carrying capacity is limited by maximum temperature of materials for inserts and contacts including terminals. The current capacity curve is valid for continuous, non interrupted current loaded contacts of connectors when simultaneous power on all contacts is given, without exceeding the maximum temperature.

Control and test procedures according to DIN IEC 60 512



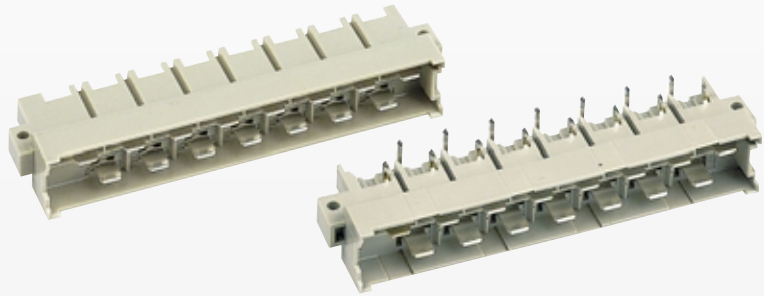
Types power to 15 A

* only valid for type H with 15 contacts

DIN 41 612 · Type H

Number of contacts

15



Male connectors

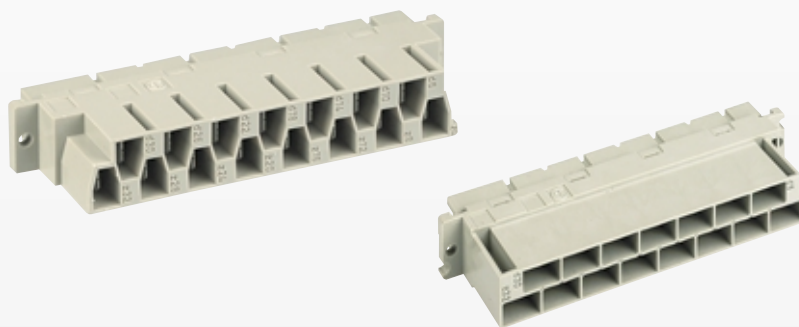
Identification	Number of contacts	Part No.	Drawing	Dimensions in mm
Male connector* for faston 6.3 x 2.5	15	Performance level 1 09 06 015 2912		
1 leading contact (position z 32)	14 + 1	09 06 015 2931		
2 leading contacts (position z 4 + z 32)	13 + 2	09 06 015 2922		
Male connector* with angled solder pins	15	Performance level 1 09 06 115 2911		
1 leading contact (position z 32)	14 + 1	09 06 115 2932		
2 leading contacts (position z 4 + z 32)	13 + 2	09 06 115 2921		

Types
power to 15 A

* Gold plated contacts on request

Number of contacts

15



Female connectors

Types power to 15 A

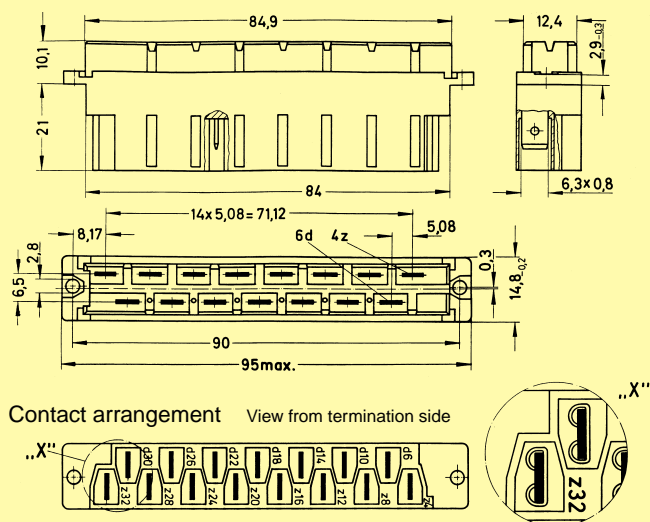
Identification	Number of contacts	Part No.	Drawing	Dimensions in mm
----------------	--------------------	----------	---------	------------------

Female connector for faston
6.3 x 2.5
Cannot be used in a shell housing

15

Performance level 1

09 06 215 2811



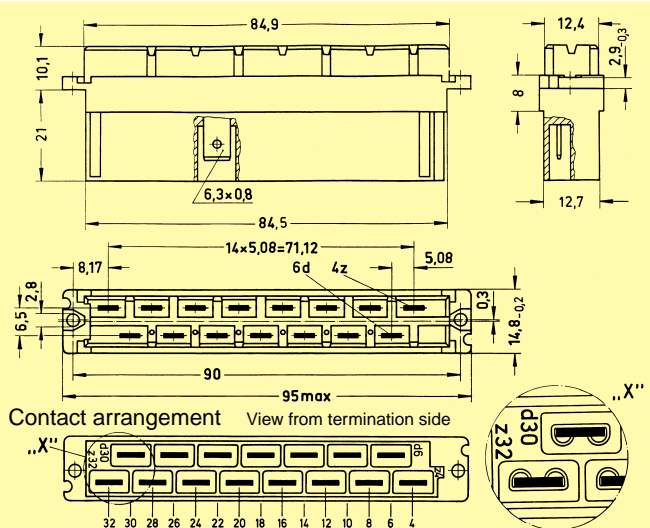
Contact arrangement View from termination side

Female connector for faston
6.3 x 2.5
May be used in a shell housing

15

Performance level 1

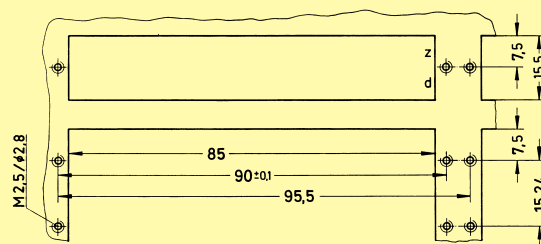
09 06 215 2871



Contact arrangement View from termination side

Shell housing see chapter 20

Panel cut out



Number of contacts

15



Female connectors

Identification	Number of contacts	Part No.	Drawing	Dimensions in mm
<p>Female connector with cage clamp</p> <p>May be used in a shell housing</p>	15	<p>Performance level 1</p> <p>09 06 015 2813</p>	<p>View from termination side</p> <p>Slot for screw driver</p>	
Panel cut out				
Termination instructions				<p>Screw driver width: 2.5 x 0.4 mm</p> <p>Stripping length: 4 - 7 mm</p>

Types power to 15 A

Number of contacts

15



Female connectors

Identification	Number of contacts	Part No.	Drawing	Dimensions in mm
----------------	--------------------	----------	---------	------------------

Female connector*
with solder pins
"low profile"

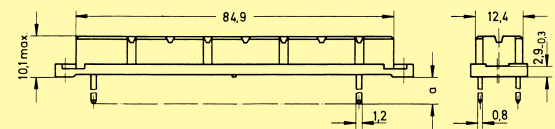
Number of contacts

Part No.

Drawing

Dimensions in mm

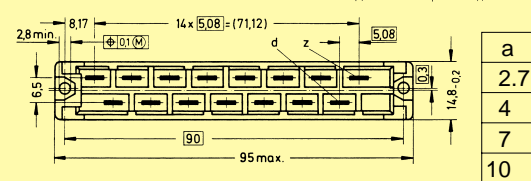
Performance level 1



2.7 mm

15

09 06 215 2812



a
2.7
4
7
10

4 mm

15

09 06 215 2821

7 mm

15

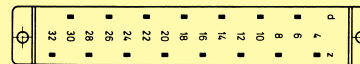
09 06 215 2831

10 mm

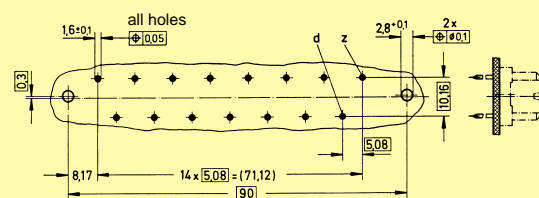
15

09 06 215 2841

Contact arrangement View from termination side



Board drillings



Types
power to 15 A

* Gold plated contacts on request