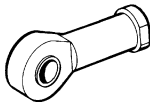
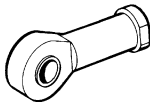
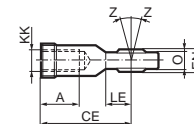
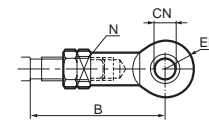


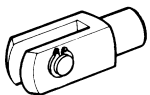
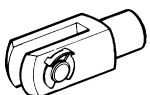
Piston rod mountings

Type	Description	Cyl. bore Ø mm	Weight kg	Order code
Swivel rod eye 	Swivel rod eye for articulated mounting of cylinder. Swivel rod eye can be combined with clevis bracket GA. Maintenance-free. Materials Swivel rod eye, nut: Zinc-plated steel Swivel bearing according to DIN 648K: Hardened steel	32	0,08	P1C-4KRS
		40	0,12	P1C-4LRS
		50	0,25	P1C-4MRS
		63	0,25	P1C-4MRS
		80	0,46	P1C-4PRS
		100	0,46	P1C-4PRS
125	1,28	P1C-4RRS		
Stainless steel swivel rod eye 	Stainless-steel swivel rod eye for articulated mounting of cylinder. Swivel rod eye can be combined with clevis bracket GA. Maintenance-free. Materials Swivel rod eye, nut: Stainless steel Swivel bearing according to DIN 648K: Stainless steel	32	0,08	P1S-4JRT
		40	0,12	P1S-4LRT
		50	0,25	P1S-4MRT
		63	0,25	P1S-4MRT
		80	0,46	P1S-4PRT
		100	0,46	P1S-4PRT
125	1,28	P1S-4RRT		

According to ISO 8139

Cyl. bore mm	A mm	B min mm	B max mm	CE mm	CN H9 mm	EN h12 mm	ER mm	KK	LE min mm	N mm	O mm	Z mm
32	20	48	55	43	10	14	14	M10x1,25	15	17	10,5	12°
40	22	56	62	50	12	16	16	M12x1,25	17	19	12	12°
50	28	72	80	64	16	21	21	M16x1,5	22	22	15	15°
63	28	72	80	64	16	21	21	M16x1,5	22	22	15	15°
80	33	87	97	77	20	25	25	M20x1,5	26	32	18	15°
100	33	87	97	77	20	25	25	M20x1,5	26	32	18	15°
125	51	123,5	137	110	30	37	35	M27x2	36	41	25	15°



Clevis 	Clevis for articulated mounting of cylinder. Material Clevis, clip, nut: Galvanized steel Pin: Hardened steel	32	0,09	P1C-4KRC
		40	0,15	P1C-4LRC
		50	0,35	P1C-4MRC
		63	0,35	P1C-4MRC
		80	0,75	P1C-4PRC
		100	0,75	P1C-4PRC
125	2,10	P1C-4RRC		
Stainless steel clevis 	Stainless-steel clevis for articulated mounting of cylinder. Material Clevis, nut: Stainless steel Pin: Stainless steel Circlips according to DIN 471: Stainless steel	32	0,09	P1S-4JRD
		40	0,15	P1S-4LRD
		50	0,35	P1S-4MRD
		63	0,35	P1S-4MRD
		80	0,75	P1S-4PRD
		100	0,75	P1S-4PRD
125	2,10	P1S-4RRD		

According to ISO 8140

Cyl. bore mm	A mm	B min mm	B max mm	CE mm	CK h11/E9 mm	CL mm	CM mm	ER mm	KK	LE mm	O mm
32	20	45	52	40	10	20	10	16	M10x1,25	20	28
40	24	54	60	48	12	24	12	19	M12x1,25	24	32
50	32	72	80	64	16	32	16	25	M16x1,5	32	41,5
63	32	72	80	64	16	32	16	25	M16x1,5	32	41,5
80	40	90	100	80	20	40	20	32	M20x1,5	40	50
100	40	90	100	80	20	40	20	32	M20x1,5	40	50
125	56	123,5	137	110	30	55	30	45	M27x2	54	72

