

- ① Switch model FL.
Ball indexing.
2 lug fixing M2 and for printed circuit board.
Alternatives . . .
4 lug fixing M2 and for printed circuit board.
Central fixing M7 x 0,75 mm.
2 lug fixing M2 for panel mounting.

- ② Number of wafers per switch.
Maximum 5.

- ③ Poles per switch.
Maximum 16.
1, 2, 3, 4 or 6 poles per wafer.

- ④ Maximum switching.
Adjustable by stops.
1 x 12 4 x 3
2 x 6 6 x 2
3 x 4

- ⑤ Rotor contacts.
S=shorting (make-before-break).
NS=non-shorting (break-before-make)

- ⑥ Indexing.
T=12 position 30° index.

- ⑦ Stops.
Customer can fit at the required position but it is recommended that this be done to specification during manufacture.

- ⑧ Contact material.
Gold plated copper.

- ⑨ Insulation material.
Special composition.

Electrical and mechanical data.

Switching capacity
max. 5VA resistive load.

Switch current max. 0,2 amp.

Switch voltage max. 115V. rms.

Current carrying max. 2 amps.

Initial contact resistance
not exceeding 15 milliohms.

Proof voltage 800 V.

Insulation resistance
not less than 1×10^{12} ohms.

Expected life
not less than 25,000 cycles.

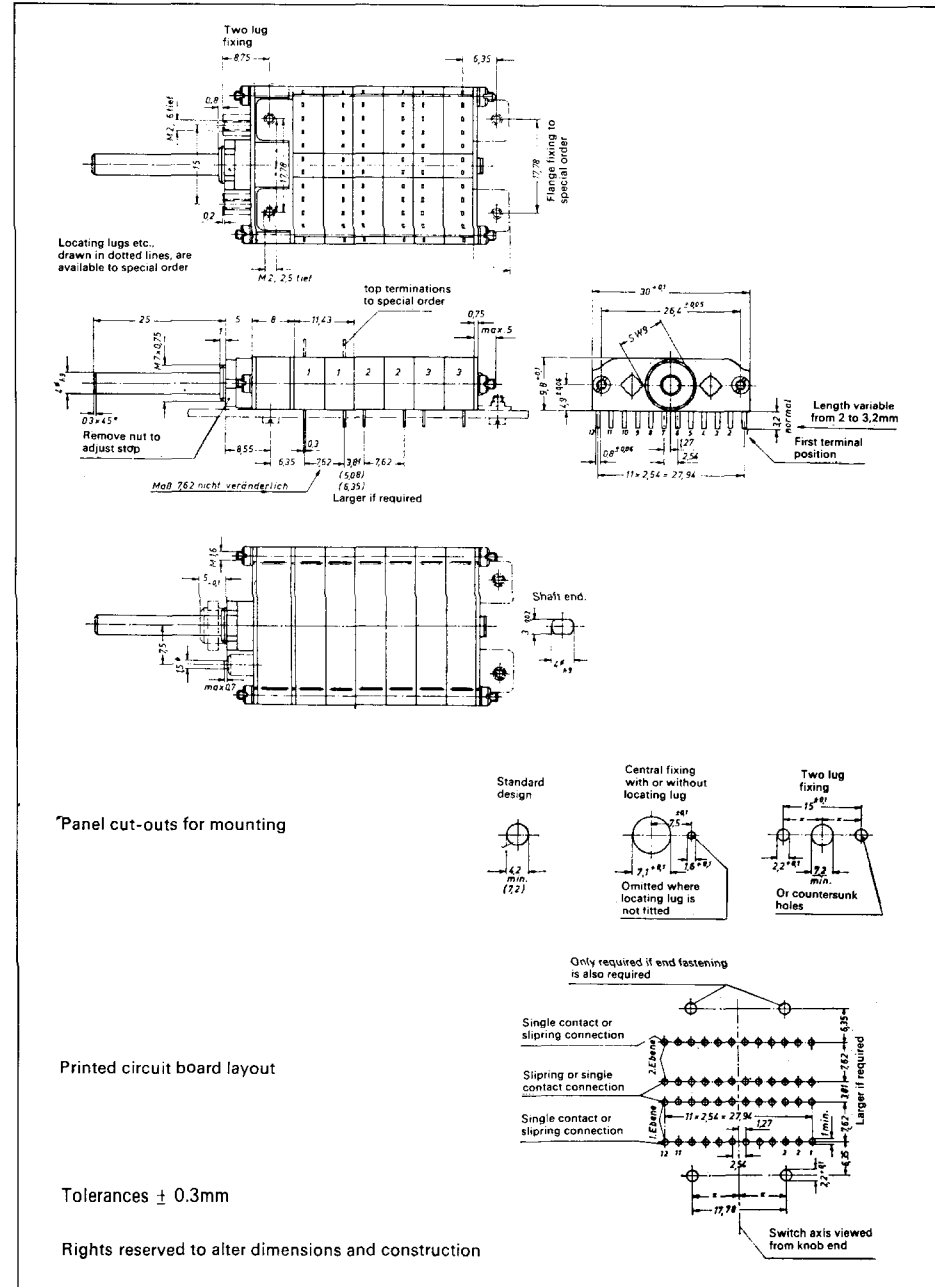
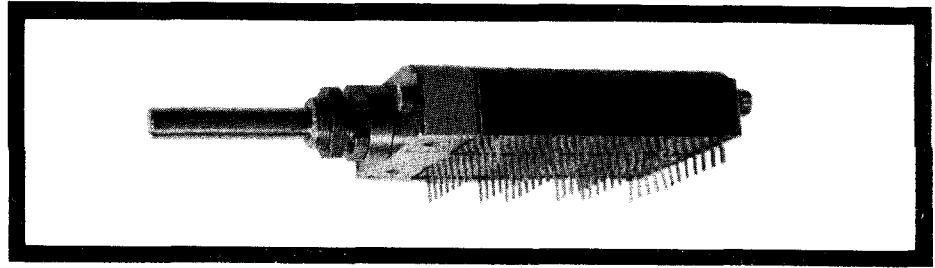
Temperature range -40° to $+85^{\circ}$ C.

Torque
not less than 0,02 Nm. (2.8 oz. in.)

Strength of stop
not less than 1,0 Nm. (141 oz. in.)

Concentric shaft models for two separate switching functions or used with potentiometers are available.

The N.S.F. Technical Service is available for all switching and application problems.



ORDERING SEQUENCE

FL 2 / 2 x 12 u. T=12 With stops Gold D.A.P.

① ② ③ ④ ⑤ ⑥ ⑦ ⑧ ⑨

Switch model	No. of wafers	Poles per switch	Max. switching	Rotor contacts	Indexing	Stops	Contact material	Insulating material
--------------	---------------	------------------	----------------	----------------	----------	-------	------------------	---------------------

