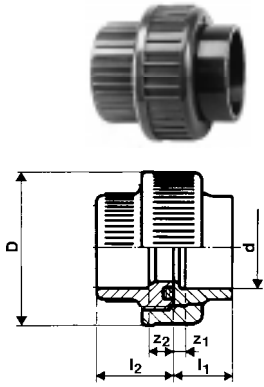


## 29.51.11

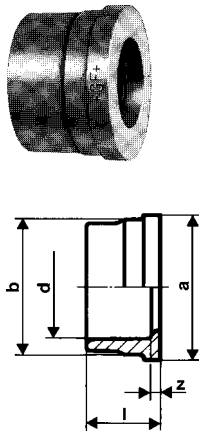


## Union

d	PN	Code	£	SP	GP	g	z <sub>1</sub>	z <sub>2</sub>	D	l <sub>1</sub>	l <sub>2</sub>
3/8	15	729.511.105				17	3	8	35	19	24
1/2	15	729.511.106				28	3	9	43	21	26
3/4	15	729.511.107				46	3	9	53	24	29
1	15	729.511.108				65	3	9	60	27	32
1 1/4	15	729.511.109				108	3	10	74	32	38
1 1/2	15	729.511.110				146	3	10	83	33	40
2	15	729.511.111				256	3	10	103	40	46

With EPDM O - ring. Can also be supplied with FPM O - ring. See page 8.10

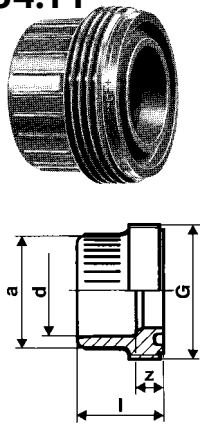
## 29.60.11



## Union End

d	PN	Code	£	SP	GP	g	z	a	b	l
3/8	15	729.601.105					3	24	22	19
1/2	15	729.601.106					3	30	27	21
3/4	15	729.601.107					3	38	36	24
1	15	729.601.108					3	44	41	27
1 1/4	15	729.601.109					3	56	53	32
1 1/2	15	729.601.110					3	62	59	33
2	15	729.601.111					3	78	74	40

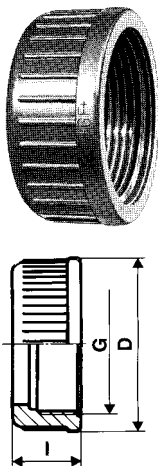
## 29.64.11



## Union Bush

d	PN	Code	£	SP	GP	g	z	a	G	l
3/8	15	729.641.105					8	24	3/4	24
1/2	15	729.641.106					9	28	1	26
3/4	15	729.641.107					9	34	1 1/4	29
1	15	729.641.108					9	42	1 1/2	32
1 1/4	15	729.641.109					10	52	2	38
1 1/2	15	729.641.110					10	62	2 1/4	40
2	15	729.641.111					10	78	2 3/4	46

## 29.69.04



## Union Nut

d	PN	Code	£	SP	GP	g	D	G	l
3/8	15	729.690.405					35	3/4	21
1/2	15	729.690.406					43	1	23
3/4	15	729.690.407					53	1 1/4	25
1	15	729.690.408					60	1 1/2	27
1 1/4	15	729.690.409					74	2	30
1 1/2	15	729.690.410					83	2 1/4	34
2	15	729.690.411					103	2 3/4	38

29 73 11

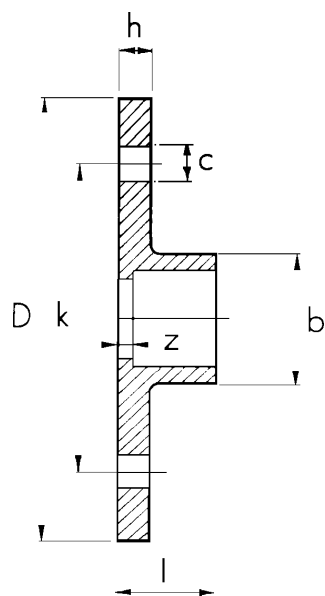


## Full Face Flange (drilled)

### Drilled to BS 10 table D and E

d	PN	Code	£	SP	GP	g	z	D	k	c	h	b	l	Holes
1/2		729.731.106		1		62	3	95	67	15	10	27	21	4
3/4		729.731.107		1		71	3	105	73	15	10	33	24	4
1		729.731.108		1		96	3	115	83	15	10	41	27	4
1 1/4		729.731.109		1		110	3	140	88	15	10	50	32	4
1 1/2		729.731.110		1		139	3	150	98	15	10	61	33	4
2		729.731.111		1		201	3	165	115	18	10	77	40	4
3		729.731.113		1		360	5	200	146	18	12	108	56	4
4	E	729.731.114		1		576	5	220	178	18	17	136	69	8
4**	D	729.731.164		1		576	5	220	178	18	17	136	69	4
6*		729.731.117		1		1730	5	285	235	22	22	198	96	8

\*\* Table D 4 holes



## Drilled to BS 4504 NP10/16

d	PN	Code	£	SP	GP	g	z	D	k	c	h	b	l	Holes
1/2		729.731.106		2		63	3	95	65	14	10	27	21	4
3/4		729.731.107		2		72	3	105	75	14	10	33	24	4
1		729.731.108		2		98	3	115	85	14	10	41	27	4
1 1/4		729.730.109		2		112	3	140	100	18	10	50	32	4
1 1/2		729.730.110		2		140	3	150	110	18	10	61	33	4
2		729.730.111		2		203	3	165	125	18	10	77	40	4
3		729.730.113		2		364	5	200	160	18	12	108	56	8
4		729.731.114		2		581	5	220	180	18	17	136	69	8
6*		729.730.117		2		1218	5	285	240	22	22	198	96	8

## Drilled to ASA 150

d	PN	Code	£	SP	GP	g	z	D	k	c	h	b	l	Holes
1/2		729.732.106		2		62	3	95	60	16	10	27	21	4
3/4		729.732.107		2		71	3	105	70	16	10	33	24	4
1		729.732.108		2		96	3	115	79	16	10	41	27	4
1 1/4		729.731.109		2		110	3	140	89	16	10	50	32	4
1 1/2		729.731.110		2		139	3	150	98	16	10	61	33	4
2		729.732.111		2		201	3	165	121	19	10	77	40	4
3		729.732.113		2		360	5	200	152	19	12	108	56	4
4		729.732.114		2		576	5	220	190	19	17	136	69	8
6*		729.730.117		2		1730	5	285	241	22	22	198	96	8

It is recommended that backing rings should be used in conjunction with all Full Face Flanges.  
For pressure ratings over 2 bar backing rings must be used.  
All full face flanges are manufactured with outside diameters to BS 4504.

## Undrilled

d	PN	Code	£	SP	GP	g	z	D			h	b	l	
1/2		729.730.006		1		67	3	95			10	27	21	
3/4		729.730.007		1		77	3	105			10	33	24	
1		729.730.008		1		100	3	115			10	41	27	
1 1/4		729.730.009		1		118	3	140			10	50	32	
1 1/2		729.730.010		1		145	3	150			10	61	33	
2		729.730.011		1		310	3	165			10	77	40	
3		729.730.013		1		371	5	200			12	108	56	
4		729.730.014		1		590	5	220			17	136	69	
6*		729.730.017		1		1270	5	285			22	198	96	

\* Maximum working pressure for 6 inch: 12 bar (173 lbf/in<sup>2</sup>) at 20°C